

Team Rector



South Crawley Parish Profile



We are an Evangelical Team Parish covering 3 neighbourhoods, each having a Team Vicar and their own church in the centre of the community. The Team Rector leads St Mary's in Southgate.

Crawley is a vibrant culturally diverse town with strong economic links to Gatwick Airport.

Our desire is to be a beacon of hope, shining the Light of Christ in our neighbourhood. We are looking for a Rector to help enable us to discern, plan and focus our ministries on the mission field that sits on our doorstep.

Are you that person?

Contents

Ministering at St. Mary's	3
• Who we are	3
• Worship & prayer life	3-4
• Missional context	5
• Outreach	6-7
• Facilities	8
About South Crawley Parish	9
• Holy Trinity, Tilgate	10
• Christ the Lord, Broadfield	10
• Governance	11
• Finance	11
• Safeguarding	11
Wider Gospel Partnership	12
Welcome from Chichester Diocese	13
Our New Team Rector	14
Living in Crawley	15
• Work life balance	15
• The Rectory	16
• The town	16
• Schools & colleges	17
• The local area	17

The Parish of South Crawley

is made up of three churches: St Mary's Southgate, Holy Trinity Tilgate and Christ the Lord (CtL) Broadfield.

All three churches are evangelical and have a similar style of worship. Each church has its own minister who is responsible for the mission, ministry and worship of their respective church. Jill, who is a part-time SSM, leads Holy Trinity; David, a full-time stipendiary vicar, leads Christ the Lord, and the Rector leads St Mary's.



Ministering at St Mary's

Informal in style, evangelical in theology and open to the Spirit, St Mary's has always attracted a broad range of worshippers at various stages of life and faith. Visitors find a warm welcome into a community which affirms the unique value and gifts of all, regardless of ability or background. Equipped by God's Word and sustained by His Spirit, our earnest desire is that as we welcome people in the name of Christ we would see Jesus drawing new disciples to Himself.

Shining light ...

Worship & prayer life

A beacon of hope – this was an image emerging from a recent prayer morning: the light of Christ illuminating our homes, workplaces and neighbourhoods. Our communal worship fans the flame as we engage with God, with His word and with each other week by week. Sunday mornings include a blend of contemporary and traditional sung-worship with band and organ, Bible-centred preaching and the sharing of Holy Communion on the 4th and 5th Sundays. Children and Young People encounter Jesus in their own dedicated groups 3 weeks out of 4 and our First Sunday Celebration, a more informal and interactive service, provides a space for us all to worship Him together.

Opportunity for sharing of testimonies, family news and prayer requests has become a particularly encouraging element of our Sunday service over recent years, and there is the chance for individuals to receive prayer ministry after the service most weeks.



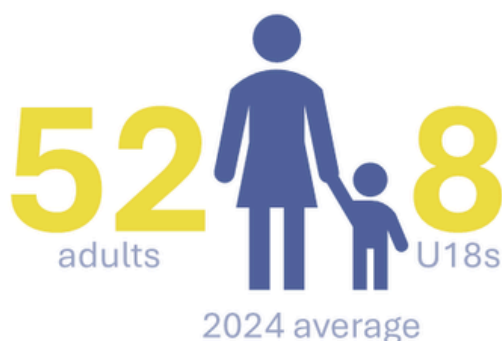
... in the Darkness

Worship & prayer life (continued)

Seeking to bring the light of Christ into every part of our lives, small groups meet during the week to study and apply Scripture, share life and pray together. The church has recently appointed a lay member to coordinate and promote such groups more widely. Once a week our central prayer meeting is a focal point for bringing all our activities and our community to the Lord in intercession. For the early birds, a group meets for morning prayer and biblical reflection four days a week. Many members are also part of the 'prayer chain' email list which is well used and appreciated, and a Pastoral Visiting team is in place to visit those who are unwell or lonely or simply can't get out to church.

Preaching and leading on Sunday mornings is supported by Gwilym, our part-time SSM, 2 lay readers and an authorised occasional preacher. Through God's abundant and sustaining grace, the increased workload of the vacancy is really strengthening the sense of team and bearing each other's burdens, especially in DCC. More widely, we have been using the time as a church to invite the Holy Spirit to guide and shape our corporate activities as we reflect prayerfully on our worship life and our outreach, asking "What's Next?". We're excited to see the part the Lord has for you in answering those prayers and questions!

On a Sunday



Electoral Roll



Missional context

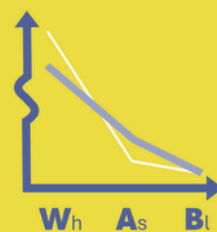
Crawley needs Jesus. Will you help us make Him known here in Southgate? One of the largest and most diverse towns in Sussex, and still growing fast, Crawley was set up for success by the 1950s New Town planners. Each of its 14 neighbourhoods is well equipped with schools, shops, food & drink and green spaces. Unemployment has always been below average and housing, though in short supply, is more affordable than in most Sussex towns and villages. But behind all this there is great need, not least spiritually.

Even though our average age is increasing and our numbers may be shrinking we still have a heart to be used by God to make an impact in our neighbourhood. Can you help us to:

- see more clearly the God who is bigger than we can imagine
- recognise the real and lasting hope that is ours in Jesus Christ
- discern and plan, practically, how to share that good news with our community



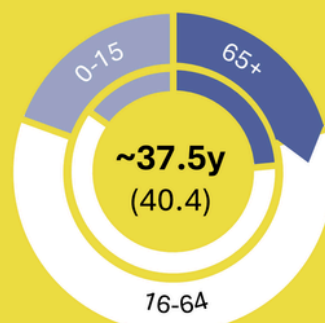
Population – Crawley vs England



More ethnic diversity

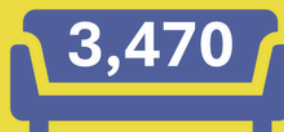


More religious diversity



Younger
(but getting rapidly older)

Crawley - Poverty Indices



4.5% on out of work benefits



18.8% of children in low income households



“Most deprived” district of West Sussex



7.3% of households in fuel poverty



Outreach

Although we may sometimes lament our lack of younger adults, we are nevertheless encouraged by what the Lord is beginning to do among the older generation. Our Thursday café serves many on the fringes of the church community and has long been a key point of pastoral contact for clergy and lay ministers alike. But our largest area of recent growth is Wednesday's Cake & Company which, whilst primarily social in focus, is starting to yield gospel conversations.



We are delighted to be starting another Alpha Course this Spring for those who are newly connected to St Mary's and seeking to know more about Jesus.

We have very good relations with Hilltop Primary School where we find a warm welcome for our weekly assemblies. Both Hilltop and Southgate Primary visit us for Christmas services (and more) and we are working to increase class curriculum visits, which provide an opportunity to show smaller groups that Jesus and His church are alive and here for them. These links have fed directly into our monthly Friday Fun Club for primary-aged children, where we get to build relationships, share the gospel and enjoy various games and activities together.



Outreach (continued)



Together with Holy Trinity we welcomed ~50 guests to Messy Christingle last December, to share a meal and hear about Jesus; most of them unchurched or on the fringes. It is always encouraging when we find out that such contacts were once regulars at our historic baby and toddler groups. We pray that there is yet fruit to come from these seeds of past ministries.

Though our outreach to children and families in particular has seemed to shrink in recent years, we long to see the next generation of Southgate come to know true fulfilment and joy in Jesus Christ.

Our new Rector should be someone who can help guide and focus all these ministries with biblical wisdom, gospel priorities and a heart for all generations.

Blurring the boundaries between discipleship and outreach is our developing ministry around mental health and wellbeing. A growing number of adults within the church have participated in the Kintsugi Hope Wellbeing course, facilitated by two church members, which is now being taken into Crawley Open House, our local homeless hostel.



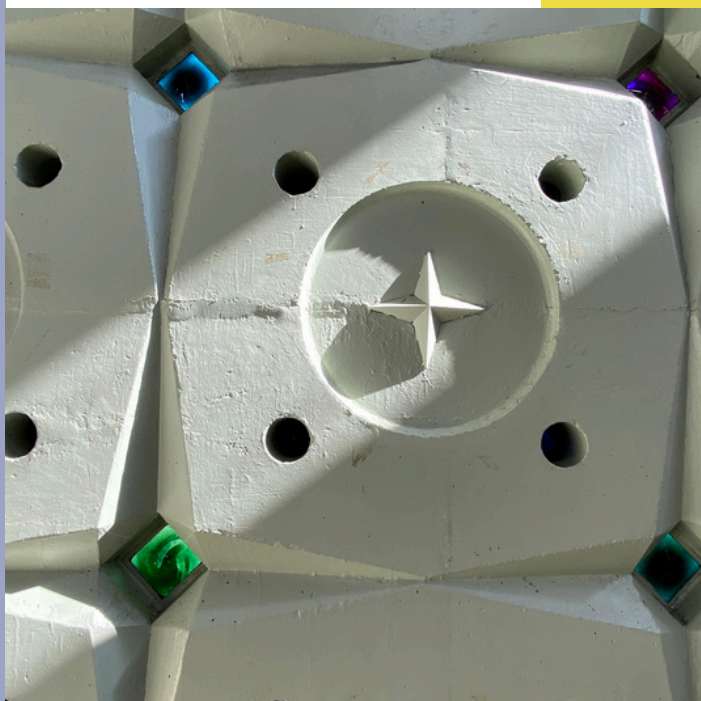
Further afield, St Mary's has established a special relationship with Kids Alive International's Chikondi Village project in Zambia, which has been a long-term beneficiary of tithing from our church building fund donations, bringing hope in Jesus' name to young victims of neglect and abuse.

Facilities

St Mary's church building is strategically positioned right in the heart of Southgate, opposite the shops. Despite this fantastic gospel opportunity, there is sometimes a feeling that our large 1950s building is invisible to many outsiders. An ambitious building project was launched in 2009 to renovate the entire building. External works were completed in 2016, improving the street presence, however complications with the new roof severely dented plans for internal refurbishment.

Many continue to faithfully donate to the building fund and there is hope that the end is soon in sight for the perpetual leaks. By the grace of God this leaves us in the happy position where we can be open to a new Rector helping us to explore new ideas, with the financial resources ready to bring them about. We would love to see our building as a hub of kingdom activity.

The church is surrounded by grassed areas (no graveyard!) including a good-sized area for outdoor activities such as the occasional open-air service. The parish office is located at St. Mary's, within the church building, with convenient access from the neighbouring Rectory via a side garden.



The Team Parish provides ...

The Team Parish provides mutual support, shared ideas and accountability between the ministers as well as an opportunity to organise joint ventures. The three vicars meet weekly to talk and pray through ministry matters and monthly (with their spouses) for a meal and prayer time together. Our Parish Administrator, Janet, works part time supporting the Rector and the three churches.

... mutual support

Traditionally, the whole parish meets together for worship on the last Sunday of January, rotating around the three churches year on year. There is also shared responsibility for Tuesday morning communion at Holy Trinity, which attracts a small but dedicated group from across the parish (and beyond). Other parishwide services include Ash Wednesday, Maundy Thursday and Christmas Eve Midnight Communion. These, along with an occasional pulpit swap, help maintain and develop our shared parish identity.





Rev. Jill Alderton

Holy Trinity, Tilgate

At Holy Trinity we are committed to deepening our relationship with Jesus through bible-focused teaching, through prayer and through fellowship with one another. We have a congregation that is faithful in meeting together for worship, prayer and giving of time and money. We are family in Jesus, so we enjoy fun and food together as well as worshipping and working together. This is a family that loves welcoming newcomers. Our relatively small size (building and congregation) feels quite intimate.

At present our most effective outreach is through friendship evangelism to over 50s. We long to see the growth of Jesus' Kingdom in Tilgate. Our prayer for the future comes from Haggai 2:2-9 – God's promise to rebuild the temple and the worship better than before.

holytrinitytilgate.co.uk



Rev. David King

Christ the Lord, Broadfield

According to the deprivation index, Broadfield is the most deprived part of Crawley with areas of it in the top 10% most deprived in the UK. But this doesn't begin to tell the story of a place that is strong on community and identity, with a good centre (the amazing Broadfield Barton) and two of the best primary schools. We are also home to the mighty Crawley Town FC!

Christ the Lord church exists to tell the people of Broadfield about the transforming hope that is found in the gospel. We worship in a church which is shared with a Catholic church and an independent one and the church building itself is connected to the community centre. Our present vicar, David, joined us in April 2024.

broadfieldchurch.org

Governance

South Crawley PCC has overall responsibility for governance, finance and safeguarding and is chaired by the Team Rector.

Each church has a District Church Council, chaired by its Team Vicar, and has a high degree of devolved authority from the PCC. Most aspects of church life are therefore the responsibility of the individual vicars supported by their DCC and this secures and underpins the individuality of each church.

Finance

Contributions to the parish share for the diocese are negotiated annually between the three churches. In 2024 the parish was able to give £100,700 with £68,100 coming from St Mary's. This amount has remained stable for the last 3 years and hovers around 55% of total unrestricted income.

The parish as a whole has Unrestricted General Funds that provide 4 months cover of normal expenses. A surplus part of these, together with Restricted Building Funds, will be needed to finance significant upcoming building repair costs and outreach projects.

Safeguarding

At the moment policies, procedures, training and DBS checks are overseen by the Parish Safeguarding Officer with support from the Parish Administrator who acts as Lead Recruiter. Each church also has a Safeguarding Officer who is the initial point of contact for any safeguarding concerns. We look forward to the fresh eyes of our new Rector as we seek to continually improve our practice in this vital area.



Wider Gospel Partnership

Crawley's design as a New Town of the 1950's enabled space for a church in each neighbourhood. Today Crawley is blessed with over 30 churches with various links and networks between them.

The annual Good Friday celebration in Crawley's town centre is a long-standing act of public witness attended by many Crawley Christians. And on Easter Sunday, sunrise Holy Communion at Tilgate Lake is a joyful expression of gospel unity to which the South Crawley team are regular contributors.



Crawley also has several charities and groups seeking to share the good news of Jesus in word and deed, supported by paid workers and volunteers from across a wide range of churches. Many in St Mary's are committed to the practical outworking of their faith through active involvement in such groups as Christians Against Poverty, The Easter Team (our local Christian food bank), The Lighthouse Project (Crawley Schools Ministry) and Love Your Neighbour.





The Right Rev.
Dr Martin Warner

Welcome from
Chichester Diocese

Proclaiming the Mystery of Faith

In 2025 this diocese celebrates the 950th anniversary of witness and evangelisation from a mission base in Chichester, building on the earlier mission founded by St Wilfrid at Selsey. 2025 also marks the 1700th anniversary of the Council of Nicaea with its reminder of the formative claim upon us of the catholic creeds.

These anniversaries are more than historical footnotes. They speak powerfully about the richness of faith and mission that is our inheritance locally and universally.

Inspired by that inheritance, we seek to be a household of faith that is endlessly curious about how the Holy Scriptures and the sacraments of the New Covenant enable us to know, love and follow Jesus Christ in today's noisy and distracted world.

If God is calling you to join us in the task of proclaiming the mystery of faith in some part of this diocese, we pray that the contribution of your gifts and experience will enrich our witness and deepen your own discipleship.

We take very seriously the call to diversity and radical inclusion as characteristic of the Church's mission. For this reason we welcome applications from ordained women and Global Majority Heritage clergy, who are under-represented in those who serve this diocese.

+Martin

Our New Team Rector

As we embark on the next chapter that God has in store for us in South Crawley Parish, and St Mary's Church in particular, we are looking for someone who is:

- a person of prayer with a love for the Lord Jesus, His people and those who don't yet know Him
- committed to the Bible as God's word and its practical application to all of life
- open to the guiding work of the Holy Spirit

As we seek to grow together in faith and service to God, we are praying for our new Rector to be:

- a strong biblical teacher and communicator with an ability to connect the bible to day-to-day life and its challenges in imaginative and relevant ways
- able to lead a Parish and a Church team, providing guidance, encouragement and oversight
- compassionate and approachable, with great pastoral skills to support individuals and families

To help us be a beacon of hope and bring the light of Christ to the mission field that sits on our doorstep we are looking for our new Rector to be someone who can:

- think strategically with a priority on outreach and evangelism to help us develop and communicate a vision for growth
- help us to refine and revitalise our ministries to children, families and young people
- identify, develop and enable the exercise of leadership and ministry gifts in others
- engage with the wider community and build bridges with those outside the church

Are you the right person to 'Come over to Crawley and help us?'



A Young
Person's View

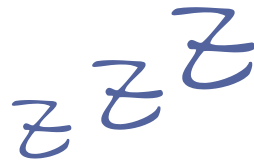
“ **1. Passionate about the Bible**
2. A good sense of humour
3. An all round good person ”

Work Life Balance

Priority #1

The number one thing we want to protect is our Rector's walk with the Lord Jesus, the second is that they would be able to serve Him here with joy.

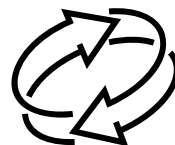
The wellbeing of our clergy is key to the health of the church and so we will respect your need for time "off duty".



Welcome

If you have family or dependants living with you, we want them to feel at home among us; welcomed, valued and respected as individuals.

St Mary's and the PCC will be supportive and encouraging to ensure you stay refreshed and renewed in ministry.





The Rectory

St. Mary's Rectory is a five-bedroom detached home at 1 Forester Road in Southgate. On the ground floor is a good-sized kitchen (with a utility area and walk in larder), a dining area and a large lounge with a functioning fireplace as well as a study and downstairs toilet. Upstairs there are 5 bedrooms and a bathroom.

Outside there is a large private garden, with a separate piece of shared garden linking the Rectory and the church. There is a driveway with space for 3-4 cars and a garage. The kitchen was recently replaced by the Diocese to a high standard (2023), and there are plans to replace the main bathroom during vacancy. We want you to feel at home as soon as possible and would gladly support with redecoration ready for your arrival so do feel free to talk to us about décor when the time comes.



The Town

Crawley is a great place to live. Whilst it may not have the historic charm of many of its Sussex village neighbours, it is incredibly well appointed and well connected for everyday life. There are many parks and wooded areas in addition to very good shopping, sports and entertainment facilities.

The location of the Rectory and church is a stone's throw from Southgate neighbourhood's shopping parade which boasts some great takeaways, a well kept pub and a good sized convenience store (with post office!). A 15 minute walk brings you to the town centre and main railway station in one direction, and in the other to the magnificent Tilgate Park or K2 Leisure Centre.



Schools & colleges

Crawley has a wide choice of schools and colleges. The Southgate neighbourhood has three primary schools plus St Andrew's CofE Primary School in neighbouring Furnace Green. There are 7 secondary schools in Crawley including a Church of England School and a Catholic School which all go up to sixth form. Crawley also has a Further Education college located in the town centre which offers a wide range of post-16 courses and apprenticeships as well as adult courses and some at Higher Education level.

The local area

However you like to spend your time off, you'll likely be spoilt for choice around here. With easy access to London, the coast and the South or North Downs, there is something for everyone. Crawley has 3 train stations with fast trains to London and Brighton as well as many westward options to Chichester, Portsmouth and beyond. With Crawley effectively marking the divide between West Sussex, Surrey and Kent you'll have easy access to the best of all three counties, offering rich history and landscape and plenty of attractions for all ages and interests.

And if that all sounds overwhelming then you'll be sure to find plenty of personal recommendations from your new parishioners, eager to make you feel welcome and valued!





St Mary's Southgate

Worshipping Jesus, Sharing His love, Making Him known



Thank you

If this has piqued your interest and you would like to find out more about the Team Rector role for South Crawley Parish please contact either The Rt Revd Ruth Bushyager Bishop.Horsham@chichester.anglican.org or Rob Miles patronage@cpas.org.uk for an informal conversation

stmaryscrawley.org

