

Profile for the Appointment of an Incumbent  
*for the*  
**Parish of St Wilfrid Haywards Heath**



*Building the Church Family  
Together in Haywards Heath*



[www.stwilfridshaywardsheath.org.uk](http://www.stwilfridshaywardsheath.org.uk)

 @stwilfridshaywardsheath

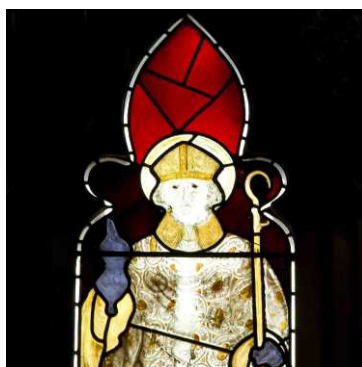
 @stwilfridshayw l

# Profile for the Appointment of an Incumbent

for the

## Parish of St Wilfrid Haywards Heath

*Approved by the PCC, 21 January 2021*



ST WILFRID'S CHURCH  
St Wilfrid - south chancel window

## Introduction

We are grateful for your interest in the vacancy for the post of Rector of the Parish of St Wilfrid.

St Wilfrid's is committed to equal opportunities and Safeguarding and expects all staff and volunteers to share this commitment and to have completed appropriate training.

In what follows we trust you will discover how our parish of two liberal catholic town centre churches has developed, as our town has grown and diversified from its mid-Victorian beginnings; our opportunities and challenges today; our vision of Building the Church Family alongside our neighbouring parishes in the Deanery of Cuckfield, other local churches and faith communities - and hence what you need to know about the Rector we are seeking. In particular you will find more about:

1. Living in our parish and its setting in the Mid Sussex community
2. Our church buildings and their halls
3. Our pattern of worship, choral and musical tradition and other aspects of our church life
4. Our outreach and involvement in the community
5. Working together with our church primary school
6. Our finances and other resources in support of our mission
7. Our Rectory and its gardens
8. The Parish Office and a summary of our parish activities
9. The Rector we are seeking; roles and responsibilities
10. Our Parish Mission Statistics
11. Who to contact with your queries and/or to arrange to meet us

## I. Our Parish in its Mid Sussex Setting

Haywards Heath lies at the heart of Mid Sussex. St Wilfrid's Church and its Rectory and Hall are in our town centre, close to the Orchards shops off South Road; these and Sussex Road offer a wide range of retail outlets. The Presentation Church and Hall are only half a mile east of the main shopping centre.

Our town sprang up with the London to Brighton line in the mid nineteenth century. Now, around its recently modernized railway station, there are major supermarkets, a hotel and offices. Restaurants and cafes in The Broadway, just to the west of St Wilfrid's, are popular venues throughout the day, while Victoria Park (which it overlooks), Clair Park and Beech Hurst Gardens provide ideal places for relaxation or a picnic.

### Places to visit

Short drives take you to Wakehurst Place ('Kew in the Country') or National Trust properties such as Nymans, Standen, or Sheffield Park, with its 'Capability' Brown gardens and nearby station on the recently extended Bluebell Steam Railway. Other gardens to enjoy include Borde Hill on the northern outskirts of the town. Just to the south are Ditchling Country Park and the wide expanse of the South Downs National Park. The historic towns of Lewes and Horsham are nearby. As ours is a commuter town, many residents take advantage of its excellent transport links to London, Brighton, Crawley, Gatwick Airport and the home counties. The M23 and M25 are minutes away.



SHEFFIELD PARK  
Famous for its autumn colours

### An expanding town

Our town is affluent, but there is a wide range of incomes across its population, which includes small BAME communities. New housing developments for families and single occupancy, including Bolnore Village in our parish, have associated infrastructure and bus services. Our town is expanding, and local unemployment is low. There are industrial estates in and around town, but the main occupations are health and social care, education, and business, financial, retail, IT and other services. A good choice of retirement and nursing homes serves our ageing population. The 2011 Census showed that, overall, Haywards Heath's population was older than the national average but younger than that of West Sussex.

## Education

Our St Wilfrid's Church (Voluntary Aided) School is just one of many good primary schools. These include Warden Park Primary Academy in New England Road, within easy walking distance of both our churches and nearby Bolnore Village Primary School. There are a number of local nurseries for younger children. Good 11-16 schools include Oathall Community College (Lindfield) and Warden Park Secondary Academy in Cuckfield. Haywards Heath College (16-19) offers A-level and vocational courses. Sixth form and FE colleges in Lewes, Brighton and Crawley also attract students from this area. Burgess Hill Girls provides private education; other local independent schools include Ardingly, Hurstpierpoint and Brighton Colleges. The popular and expanding Universities of Brighton and Sussex are easily accessible.



ST WILFRID'S CE PRIMARY SCHOOL  
Eastern Road, Haywards Heath

## Health, Leisure and Recreation

Haywards Heath is fortunate to have the Princess Royal Hospital which is linked to the Royal Sussex County Hospital in Brighton, and the private Nuffield Hospital. We are well served by our health centres, dental and clinical practices and by community nursing and care homes.

The Dolphin Leisure Centre provides opportunities for swimming, sport and fitness exercise. The surrounding countryside has several golf clubs and gyms. For those wishing to discover and participate in sport there is a wide range of clubs and societies locally. Here and in the surrounding villages there are regular meetings of gardening, local history, music, drama and craft societies as well as community and social gatherings. Our Churches and Halls are often the venues for community events and our expanding programme of musical and choral concerts, now enhanced by the newly installed lighting in St Wilfrid's Church, should maintain its leading role as a musical and choral events centre.

## Haywards Heath's Churches and other Faiths

There is a wide range of other Anglican churches in Cuckfield Deanery (within which our parish and those of St Richard, The Ascension and Wivelsfield form a local prayer cluster). Other denominations in and near Haywards Heath create opportunities for further sharing of worship and prayer and we also enjoy good relations with other local faiths including the Mid Sussex Islamic Centre and Mosque in nearby Wivelsfield Road.



## 2. Our Church Buildings and their Halls

St Wilfrid's Church stands at almost the highest point in the town, 300ft above sea level, overlooking the Weald and South Downs, and it is claimed that the church marks the crossover point at the very centre of the old County of Sussex. Designed by George Frederick Bodley RA (1827-1907), it was constructed on the edge of what was a rapidly expanding railway town following the completion of the London and Brighton Railway on 12th July 1840. The church's foundation stone was laid on St Wilfrid's Day in 1863 and the building work continued throughout 1864. St Wilfrid's was consecrated on Monday 5 June 1865 - St Boniface's Day - as the town's rapid expansion continued.



ST WILFRID'S CHURCH  
from South Road

The church was built in a cruciform shape, in a modern Gothic Revival style which reflects an earlier fourteenth-century design. It has a low spired 88ft tiled central Sussex style tower rising above the chancel. The tower was noted and praised by Nikolaus Pevsner for its design. It rises in three stages and is topped with a shallow four-sided tiled cap. The sandstone blocks (with Scaynes Hill stone dressings) for the external walls were donated by the owner of the Franklynn Quarry at Birch Green on the Franklynn Estate, on the south side of the Scaynes Hill/Lewes Road. The church was built by John Fabian of Brighton and its stone pillars were constructed with the assistance of Thomas White, the founder of a building firm based in Franklynn Road. The internal walls were faced with red brick from St John's Common in Burgess Hill; red clay tiles covered the floor and the wall panels below the windows. The brick walls are now painted white but a small section showing the original red brick remains on the wall in the north transept. The nave has five bays, buttressed north and south aisles and a clerestory lit by quatrefoil and cinquefoil (four- and five-lobed) windows; the roof is tiled. New choir vestries were built on the north side of the church in 1880.

The new church was at first glazed with windows of plain frosted leaded glass. The first stained glass window, which depicts St Wilfrid, was fitted on the south side of the chancel under the tower in 1867. It was made by Ford Madox Brown and William Morris. The other windows were slowly re-glazed using stained glass until 1893; they depict biblical characters and saints. The windows on the south side were made by a number of artists including Burne Jones, William Morris, Thomas Garner and Gilbert Scott, and the north aisle windows in the glass workshops of Burlison and Grylls. The window depicting St Richard on the north side of the chancel was designed by the architect himself and made under his supervision by

Burlison and Grylls. In the Good Shepherd Chapel there is a memorial window for two brothers killed during the Great War which is of considerable artistic significance. In 1962, during a number of church alterations, a new East Window was commissioned and fitted depicting the Ascension of Christ, with the eleven disciples depicted in various colours, including red, deep blue and green, at the base of the window. The window was designed by Antoine Theodore M. Acket (1918-1981) and was manufactured by Wainwright & Waring.



ST WILFRID'S CHURCH  
Good Shepherd Chapel window

St Wilfrid's Church was listed under Section 30 of the Town & Country Planning Act 1947 as a building of special architectural and historic interest on 10 September 1951, when it was 86 years old. It is listed at Grade II\* by English Heritage. In February 2001, St Wilfrid's Church was one of only 54 Grade II\* listed buildings, and 1,028 listed buildings of all grades, in the whole district of Mid Sussex.

The church was reordered in early 1997. A new pipe organ built by Kenneth Tickell was put onto a newly built west end balcony in 1998. The sanctuary and chancel area was opened up to provide a flexible space for worship and other events. The communion rails were re-sited in the nave. A new slate floor was laid in the nave, and the church repainted. The church benefits from an exciting and newly installed lighting system which not only enhances religious worship but which will enable the church to be used for dramatic and musical performance.

## The Church of the Presentation, New England Road

The parish's second Anglican church was the result of a generous local benefactor. It had its origins in a temporary iron building opened on 15 August 1882. Its growth justified an extension in 1886. The present pebble dash and brick building, designed by Thomas Tyrwhitt (1874-1956), replaced it in August 1897.



PRESENTATION CHURCH  
Central east window and Feast of Title service



This fine building, much loved by all who worship there, is admired for its architectural and artistic features. There are high, round-headed stained glass east windows in the apse, which has a panelled roof and is behind a round-headed, broad arch. The nave, with an arch-braced roof, has plain, lower windows which are set between external buttresses. The entrance in the lower west end is surmounted by the church bell in a gabled roof extension.

## The Church Halls

Our two church halls are used for hosting our weekly charity lunches, for serving refreshments after our church services, and for our PCC and committee meetings. St Wilfrid's Centenary Hall and the Presentation Church Hall are also used extensively by local community groups and members of the public and generate significant income for both our churches. In the present pandemic it has not been possible to fully utilise our halls as in previous years, with a significant loss of income for the church, but we are working hard to retain our usual groups and attract new hirers and to operate the halls following government guidelines and in a way that is safe for everyone.



ST WILFRID'S CENTENARY HALL  
off St Wilfrid's Way, leading to the  
Parish Office and Rectory

Members of the public regularly hire the halls for private functions, as both have good catering facilities. Each hall has a private, easily accessible car park. The Centenary Hall is attached to the St Wilfrid's Parish Office and the Rectory and is opposite a public car park and shopping precinct. Both halls are in good condition and are well maintained.

**PRESENTATION CHURCH HALL**  
The car park is opposite the Church's west  
entrance; access to both is via the Marylands  
cul-de-sac, off New England Road



ST WILFRID'S CENTENARY HALL  
Mothers' Union Cream Teas, 11 August 2018

### 3. Pattern of worship and our choral and musical tradition

#### Before the 2020-21 Covid-19 pandemic

Full details of the normal weekly pattern of worship at our churches, and Messy Church in the Centenary Hall, all of which have been in abeyance since March 2020 because of the pandemic, are given here on our parish website's Church Services page:

[www.stwilfridshaywardsheath.org.uk/?page\\_id=1102](http://www.stwilfridshaywardsheath.org.uk/?page_id=1102)

#### Since the first lockdown in March 2020

Online services were soon introduced and have continued since then, with a Sunday morning weekly Parish Eucharist live streamed and then available as a recording via our parish Facebook's Videos page:

[www.facebook.com/pg/stwilfridshaywardsheath/videos/?ref=page\\_internal](https://www.facebook.com/pg/stwilfridshaywardsheath/videos/?ref=page_internal)

These Eucharists have been streamed from celebrants' homes, but whenever possible, following the precautions outlined in Government regulations and diocesan advice, Sunday morning Eucharists have been held in our churches and streamed from St Wilfrid's Church. Recently, Wednesday morning Eucharists have also been streamed weekly on Facebook from the celebrant's home. Our first Zoom service (for children) was given on Christmas Eve. We aim to build on this precedent.



TAIZÉ SERVICE, ST WILFRID'S CHURCH

This enjoys good monthly attendances from our own and other churches in the town and further afield

In more normal times, our clergy wear vestments and servers, the choir and Assistants of Communion have robes. Sermons are thought-provoking and theologically based. The Church School contributes termly and a Children's School Choir contributes to our worship. Our Church School holds School Services each term, and there is an annual Town Civic Service. An ecumenical Remembrance Day Service is led by the incumbent at the local War Memorial in Muster Green.

The major Christian festivals attract very good attendances. Our Christingle and Crib Services at St Wilfrid's and our Carol Services and Midnight Eucharists have been well attended. Holy Week plays an important part in our devotions and our Easter Day celebrations are always well attended. Harvest Festival too is an occasion when all our church families can join in our thanksgiving.



Our Patronal Festivals are opportunities for our two congregations to come together, while Harvest Festival and Mothering Sunday appeal particularly to our younger parishioners and their families. On Ascension Day we are invited to worship at The Ascension Church in the town which, prior to 2008, formed part of a Team of churches in the town with The Good Shepherd Church, which later closed and which is commemorated in our Good Shepherd chapel in St Wilfrid's.

Our newest parish services - Taizé and Messy Church - enjoyed thriving numbers prior to the present Covid-19 pandemic with attendance from other denominations as well as our own congregations. We used to hold a weekly Toddlers Service in the Centenary Hall followed by Play Time, but due to declining numbers it was decided that this service could not continue in the present crisis, but it is hoped that it will be possible to rekindle all these forms of worship and fellowship in the near future. Our Sunday School ceased to function in 2017 and so far we have been unable to find a workable way to restart it. There is certainly the potential for one, given the numbers we attracted to our Messy Church and Toddlers Service and with the excellent links we have already with our church school. Developing further and revitalizing links with other Christian and non-Christian communities is something we hope to achieve in the near future.

In normal circumstances we offer home communions to around 20 people a month in residential care homes and their own homes.

During the present pandemic we continue to keep in touch with all our parishioners not only online through our weekly newsletter and Facebook and Twitter profile but also by regular telephone calls. We are continuing to provide our streamed choral Eucharist each Sunday, and hope to provide worship opportunities and other services for both our congregations during the interregnum and for as long as restrictions enable churches to remain open.

## **The Choir and our Choral and Musical Tradition**



**TICKELL ORGAN, ST WILFRID'S CHURCH**  
Installed in 1998 in our choir gallery, which was itself installed in 1997 as part of the church's re-ordering that year, and now benefiting from the new lighting system (2020). The instrument and its history are described on our parish website

St Wilfrid's is proud of its strong musical tradition and fortunate to possess a Director of Music and Organist who leads a mixed choir of fifteen which includes fine soloists and musicians and leaders. We also

have, in one of our choristers, the dedicated organiser of our regular professional concert programme which has included six lunchtime and two evening concerts a year and who also provides the piano accompaniment for our regular services and our Taizé services when they were taking place. Performers are attracted from across Sussex and London and local music societies and choirs also take advantage of our church for practices and concerts.

One of the 'jewels' of the church is the Tickell organ, installed on our purpose built west end gallery. Some of the country's finest organists, including Dame Gillian Weir and Wayne Marshall, have given recitals here. Our Director of Music encourages new young musicians and he has established and developed stronger links with our church primary school.

While St Wilfrid's was closed during the Coronavirus pandemic our Director of Music included organ voluntaries to enhance our virtual church eucharists on Facebook. We have ambitions to increase the range and diversity of our concerts, which could include dance and dramatic performance. Our new lighting scheme and system (installed in 2020) not only enhances the atmosphere for our worship and music but as a feature can offer other opportunities for community engagement with our church.



CHARITY CONCERT AT ST WILFRID'S in aid of Friends of Chernobyl's Children, 18 November 2017. This included the première of a substantial work by a local composer, with a themed commissioned painting. It was performed by local instrumentalists and a professional soprano. Also featured in the programme were the church's choir, organist and readers. A harpsichord was brought in for the occasion

The Church of the Presentation also provides an additional alternative venue for smaller and more intimate special musical and community events. Successful precedents for this have been set in our recent Feast of Title weekends, when there has been a concert in church (with humorous monologues as well as choral and solo singing and instrumental music), while the Presentation Hall has been used for our popular Saturday afternoon buffet teas and singsongs.

PRESENTATION CHURCH HALL  
Community buffet tea and singsong,  
2 February 2019, on the eve of the  
Church's Feast of Title



## 4. Our Outreach and Community Involvement

Our parish supports a very wide range of charities through its charities of the month scheme and donations to other good causes. Fundraising methods for these and our own funds include community lunches in our church halls (served by a number of our parish groups), our Tuesday morning Coffee Stop in the Centenary Hall, where Fairtrade products, books, greetings cards and bric-à-brac are sold, and quiz nights and other evening functions. This activity reflects our Christian obligation and continuing commitment to helping others. In the 12 months before the pandemic more than 30 charities benefited, including overseas missions, Christian Aid, The Children's Society and Diocesan Family Support Work, as well as local, national and international Christian and secular charities. Our Men's Group very effectively supports the local Rotary Club's annual darts competition for local hospices and other charities.

Haywards Heath Town Council has very strong links with our parish and each year in normal times we celebrate a Civic Service. For example, it partly funds the maintenance of the landmark clock on the church tower which is a memorial to those who died in the First World War. Planned to coincide with the Town Council's September Town Day in Victoria Park, we organised two community exhibitions in the church – a Festival of Talents in 2018 and then a Festival of Hope in 2019 - with a 'Creationtide' environmental theme, complete with 'Goran the Earth Dragon'. These demonstrated the wide range of hobbies, crafts and interests of members of our congregations and individuals and organisations in the Mid Sussex community; they attracted wide local interest. Sadly, this September the pandemic prevented the presentation of an impressive 'Son et Lumière' production in St Wilfrid's Church. This had been planned by a committee representing the Town Council and many community bodies, and chaired by a member of our PCC who had played a leading role in organising our successful 2018 and 2019 festivals.



ST WILFRID'S UPPER CHURCHYARD  
Parishioners take a refreshments break  
during scything, 31 August 2018

The parish has recently been inspired and motivated by its younger members to highlight and further enhance its long-standing concern for environmental issues and action to address them. As a result, St Wilfrid's Church has achieved the A Rocha Bronze Eco Award and is working hard to gain Silver status. The PCC, strongly supportive of this, is pursuing further ways to promote and achieve energy efficiency and environmental safeguards. For example, over many years our churchyard has been carefully managed and maintained. It is a well respected local example of

how churchyards can preserve our natural habitat and how the conservation of varied and historic plant species can be used for educational purposes. Townspeople and visitors frequently walk through it and regard it as a civic asset, a haven of tranquillity in the heart of our busy town.



ST WILFRID'S LOWER CHURCHYARD  
Ox-eye daisies and other flowers,  
7 June 2015

FESTIVAL OF TALENTS AT ST WILFRID'S  
Craft exhibits by members of the  
Presentation Church  
8 September 2018



## 5. Working together with our Church Primary School

Our Rector plays a significant role in the life and governance of St Wilfrid's Church of England Primary School, Eastern Road. Weekly worship is led by our Rector and shared with clergy from other local churches, with separate weekly collective worship for Key Stages 1 and 2, and Eucharistic services for year 6 with curricular and festival visits to both our churches. Remembrance Day services and Carol Services are held for local schools. Our own school choir of Year 5 children regularly contributes to the Sung Eucharists at St Wilfrid's Church under the leadership of our Director of Music.



ST WILFRID'S CE PRIMARY SCHOOL  
Eastern Road, Haywards Heath

As St Wilfrid's is a Voluntary Aided School, our parish priest serves as an ex-officio governor and attends full Governors Meetings and the school's Strategy Committee; the Rector has also been frequently appointed as chair of the school's Spirituality Committee.



As we focus on 'Building Our Church Family' the school needs to be a primary focus of mission. It is important to continue to develop the firm links already established between the church and the school. It is essential to increase collaboration and communication between them and for this to become more formalized. Excellent support is received from the Chair of Governors, who is an active and committed member of our congregation, as are other Foundation members of the governing body. In its latest Ofsted Report of May 2019 the school was categorized as 'Good' across all areas. It was also classified as "Good" in the SIAMS inspection in October 2019 and is now on its journey to "Excellent". The school has 397 pupils on the school roll. It runs breakfast and after-school clubs and has an active and effective parent teacher association, the Friends of St Wilfrid's.

FESTIVAL OF HOPE AT ST WILFRID'S  
7 September 2019  
The school's Headteacher (left) and  
Chair of Governors accompany Goran  
the Earth Dragon - propelled by pupils -  
on his walkabouts in Victoria Park.  
Our festivals have run alongside the  
Town Council's Town Day.



## 6. Our finances and other resources in support of our mission

Historically the parish has been in a reasonably comfortable financial position. However, in common with many parishes across the Church of England, declining numbers have led to an increasingly challenging position, which has been exacerbated by the Coronavirus pandemic.

The key issue is paying for day-to-day expenses. In 2019, running costs of our two churches were some £101,500, but regular voluntary giving was around £86,500 – a shortfall of £15,000. Much of that shortfall was made up by drawing on reserves – but clearly that cannot continue indefinitely. In normal times, our two Halls earn a healthy surplus over their running and maintenance costs, and that also has helped to meet the shortfall on the churches' running costs.

Additionally, for 2020 the PCC has for the first time paid less than the full parish contribution requested by the Diocese (£68,310 compared with £71,883).

The pandemic has reduced our income – affecting most notably cash collections in church and the surplus on the Halls. The loss of income is in the order of £20,000 per year. The Deanery has taken this loss into account in agreeing our parish contribution for 2021 of £60,000.

The parish benefits from income from 16 historic endowments, which account for over three-quarters of the apparently large funds shown in our accounts. Most of the endowments are non-expendable – the capital cannot be spent, so that it produces income in perpetuity to support the parish. As a result of income from endowments the maintenance of the large, Victorian Grade 2\* building of St Wilfrid's Church has been manageable in financial terms, as the endowments restricted to upkeep of that church produce income of around £12,000 per year. That said, refurbishment such as the lighting project was funded to a considerable extent from legacies, and many of the legacies received over the years have been spent out.

Overall, whilst the parish is reasonably well provided for in terms of fabric upkeep, meeting the ongoing daily parish expenses is a significant concern: this is something we hope a new incumbent will help us to address.

Our parish's Annual Reports and Financial Statements can be viewed on the Charity Commission's website: enter our Charity Number 1130413 here:  
<https://register-of-charities.charitycommission.gov.uk/charity-search>

## 7. Our Rectory and its gardens

The Rectory of St Wilfrid's is situated next to St Wilfrid's Church and churchyard, very close to the town centre shops, Town Hall, library and other amenities, and only 10 minutes walk from Haywards Heath railway station to the north. It is a modern five-bedroomed house with kitchen, lounge, bathroom, toilet, study, hall, porch, good sized bedrooms and a small box room and has a large garden on three sides. It has a large double garage and parking spaces for two cars. The Rectory enjoys fine views across to Victoria Park and beyond to the South Downs.



THE RECTORY, ST WILFRID'S WAY,  
off Church Road, seen from the  
Centenary Hall car park

The Rectory has a large double garage with a small private car park. It is connected to the Parish Office and the Centenary Hall.



THE CENTENARY HALL, PARISH OFFICE  
AND RECTORY  
from St Wilfrid's Way

THE PARISH OFFICE, RECTORY AND  
ST WILFRID'S CHURCH  
(photographs 22 July 2020)



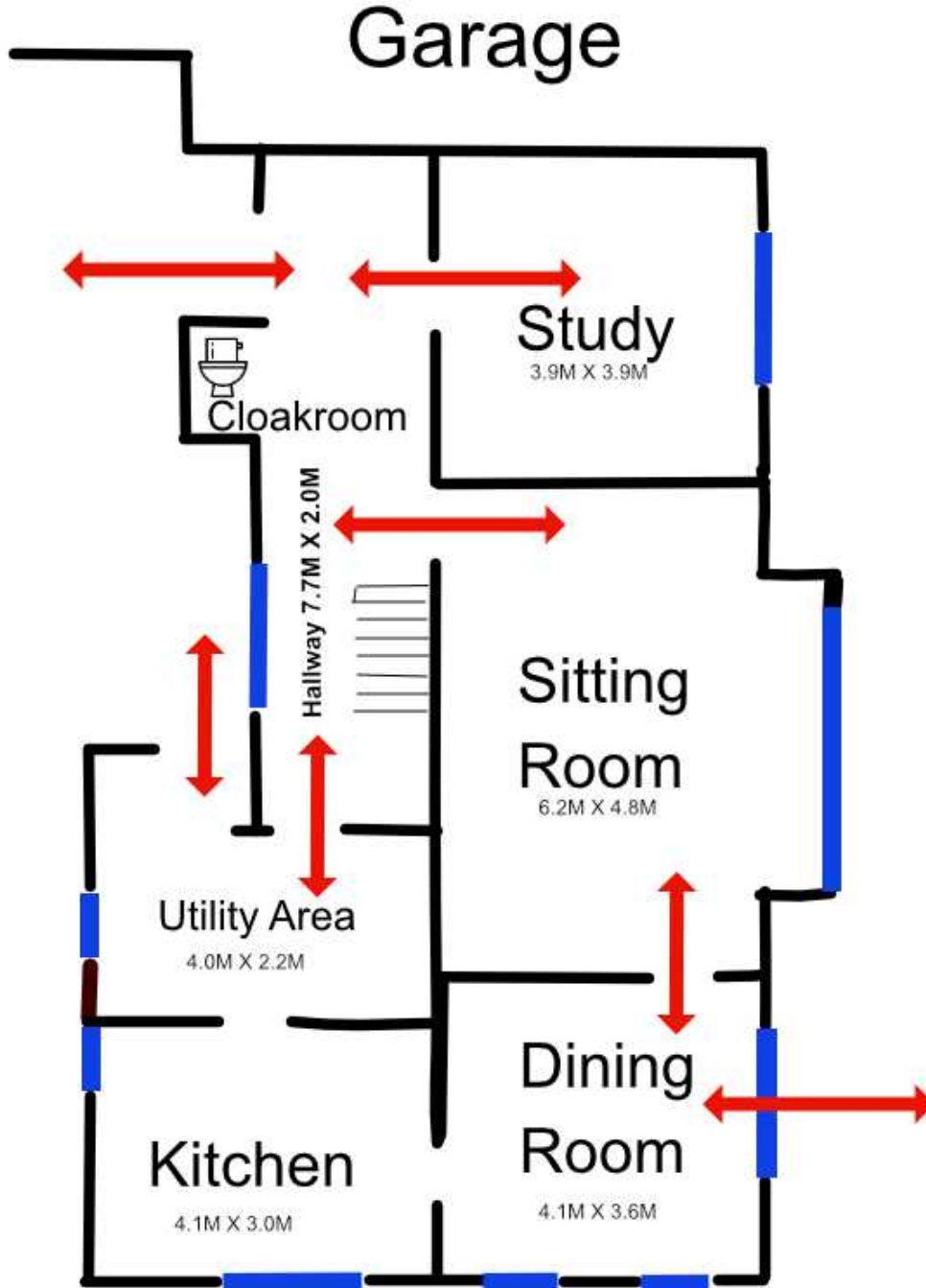
VIEW SOUTH FROM THE RECTORY  
GARDEN PATIO ACROSS VICTORIA  
PARK TO THE DOWNS  
(taken on the misty afternoon of  
2 February 2021)

### **Outline plans of the Rectory's ground and first floors**

Outline plans of the ground and first floors are shown below on pages 15 and 16. These have been produced from digital copies of the original plans which have been kindly provided by the Chichester Diocesan Property Services Department.

All measurements are in metres and are approximate.

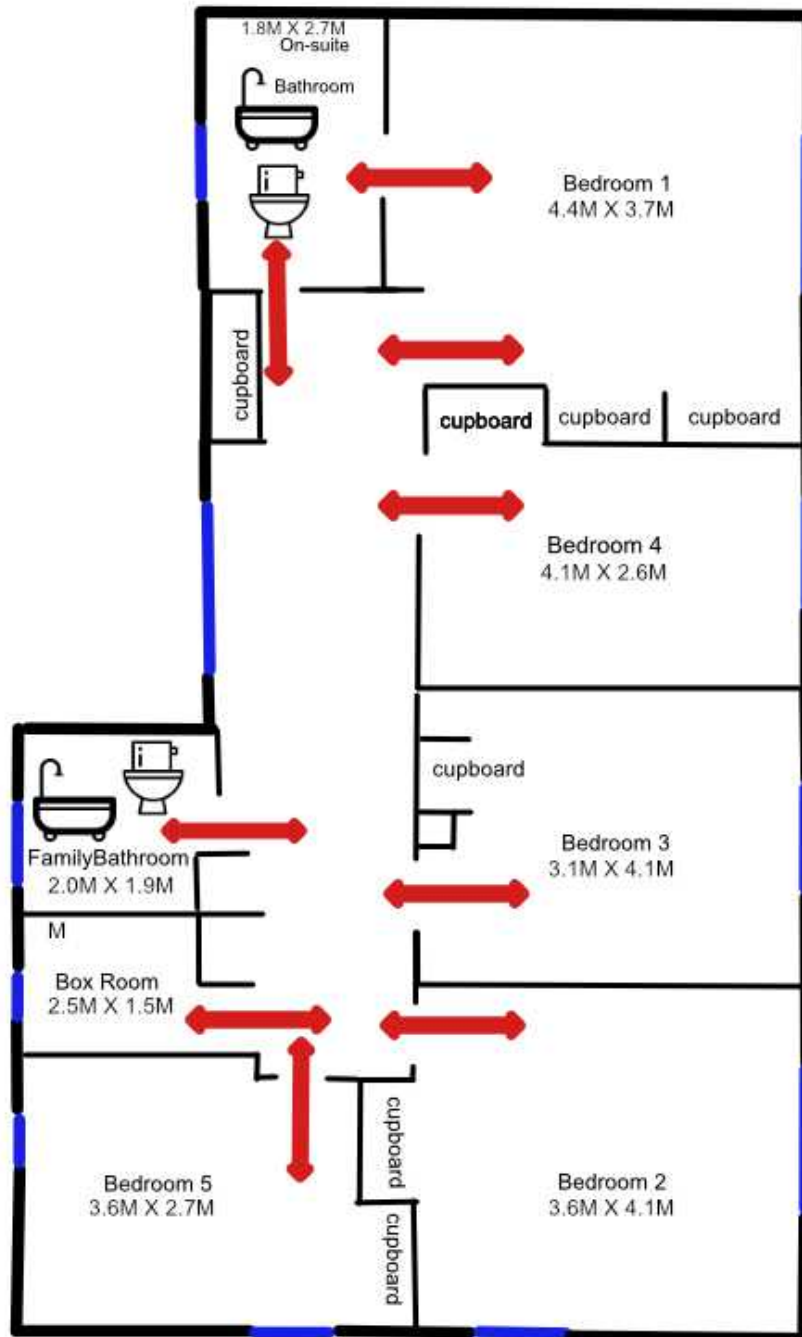
## St. Wilfrid's Church, Haywards Heath, Rectory Ground Floor Plan



Please be aware, all measures are in Metres and are approximate



## St. Wilfrid's Church, Haywards Heath, Rectory First Floor Plan



Please be aware, all measures are in Metres and are approximate

## 8. The Parish Office

St Wilfrid's Parish Office, next to the Centenary Hall, has the resources to manage and co-ordinate the life of our parish. Administration has been conducted by the Rector and the PCC Secretary. Other members of our congregations produce our newsletters and service sheets and maintain our web presence. As well as our new website - at [www.stwilfridshaywardsheath.org.uk](http://www.stwilfridshaywardsheath.org.uk) - we have Facebook and Twitter pages and entries for each of our churches on A Church Near You. During the pandemic crisis we have been live-streaming our services on Facebook, and have conducted some PCC meetings on Zoom.

Since 2018 we have used the Church Suite online church management software for bookings, parish address book, calendar of events, church rotas, children's activities, and for internal communications but regularly telephone parishioners with no internet access. The PCC has discussed the need for and resourcing of a parish administrator but at present administration is conducted efficiently and effectively by our PCC Secretary and others who so generously give of their time.



MEN'S GROUP WORKING PARTY  
tidying the Presentation Church grounds,  
August 2018

## 9. The Rector we are seeking

Our new Rector will be an inspirational, creative and energetic leader who will work with us to enhance all aspects of our parish life through the continuation of our shared Christian love, fellowship and worship. We pray that our new Rector will:

- have a sense that God has called them to be our Rector and that together we can bear witness to Christ's teaching and grow his kingdom in the world.
- recognise the many strengths but also some of the shortcomings apparent in our parish life and mission and be realistic about the challenges that we face both here in Haywards Heath and in the church nationally.

- be able to inspire and motivate our present and future church members by their example and leadership.
- place the Eucharist at the centre of our worship.
- be sensitive to the traditions of both our churches, but have imaginative ideas as to how we might grow in faith and build our church family.
- relate to congregations of all ages and needs – the elderly as well as children and young adults.
- understand and empathise with families, their issues and concerns, especially with all the tensions that the present pandemic has created in our society.
- develop further links with the local community, other churches and denominations to further the work of Christ in the community.
- have a thorough knowledge of theology and scripture, and the confidence to educate, instruct and debate on important theological and liturgical matters from the pulpit and to encourage Enquirer Groups.
- recognise the priority of revitalizing both our churches at this difficult time.
- appreciate the importance of strengthening the links with our Church Aided School and other schools in the parish.
- have good administrative skills and interpersonal skills commensurate with running two churches.
- be comfortable with the use of IT, which is used extensively for communication and parish administration.
- be committed to following the Safeguarding principles of the Church of England.

We pray that we will always be a welcoming church where all are valued, and we hope that with our new incumbent we can provide for the spiritual and social needs of all within our parish. Since 1865 St Wilfrid's has held a prominent place in the life of Haywards Heath. Building on the legacy of the past, we are confident that together we will grow our church family and further the mission of the church in the future.

We welcome applicants who share our vision for the future.

We envisage our two churches growing as community focal points which will draw people into their lives, so that they too can experience the love of Christ that we all share. As we build our church family - a new generation of believers and workers - together we will ensure that, whatever changes occur in our society, St Wilfrid's parish will still have a prominent position and role in the religious life of the town - a role it has been privileged to play since 1865.



AT CHICHESTER CATHEDRAL  
15 February 2018

Members of our two churches take up the kind annual invitation to tea, cakes and seats alongside the Choir at Evensong on the day when our parish is prayed for. We enjoy excellent relations with our mother church in Chichester

## **The Rector's responsibilities and roles**

Those responsibilities and roles which comprise the usual duties of an incumbent and some which may be peculiar to our parish include:

- Conduct of services and maintaining worship in both our churches
- Ex-officio governor of St Wilfrid's CE Primary School
- Home Visits and Communion
- Marriage and Confirmation preparation
- Trustee of the James Bradford Almshouses, Haywards Heath
- Parish Returns
- Production of the weekly Sunday Link service and news sheet, and special service sheets
- Selection of Hymns etc in discussion with the Director of Music
- Leading the annual Town Service in St Wilfrid's Church and the town's Remembrance Sunday morning service on Muster Green

The previous Rector undertook a substantial number of roles. However, we would expect our new Incumbent to evolve their own ministry, which would receive the enthusiastic support of the church family.



## 10. Our Parish Mission Statistics

Due to the Covid-19 pandemic our church buildings were closed for a large part of 2020. Government guidance and restrictions meant that not only was the number of services reduced but there was a corresponding reduction in attendance over the celebration of some of our major Christian festivals. The Vacancy in the parish also meant that we were unable to provide our normal patterns of worship. However, we have embraced the new technology to provide online services and by more traditional methods of communication have remained in close contact with our worshipping congregations and the wider community.

Our Diocesan Statistics for Mission returns for 2019 and 2018 are provided below on page 21 to give a more accurate picture of life in our parish and the worshipping community of our two churches under normal circumstances. However, copies of our returns for 2020 can be viewed at <http://parishreturns.churchofengland.org>

As many of the questions were different in 2020, a summary is also provided here to provide some insight into the life of our parish and our two different worshipping communities:

### Statistical Summary for 2020 for St Wilfrid's and The Church of the Presentation

*Electoral roll:* 150

*Attendances at our Christmas Eve and Christmas Day services:* 47 (SW) & 12 (Pres.)  
*Attendances at services in our two churches during October 2020:* 244

*Total no. of our worshipping community from both churches at the end of 2020:* 245  
*comprising:*

<i>Children 0-10 .....</i>	<i>44</i>
<i>Young People 11-17 .....</i>	<i>3</i>
<i>Adults 18-69 .....</i>	<i>94</i>
<i>Adults 70+ .....</i>	<i>104</i>

There was a total of 2 adults who left our worshipping community and although there have been fresh expressions of interest due to the pandemic these are on hold.

'Church at Home Services' were not available during the Lockdown in March-July or from October 2020.

There have been 2 couples married in our churches in 2020.

There have been 2 funeral services held in our churches, with 9 funeral services conducted by members of the ministry team at a crematorium, and 2 further services for a committal or burial of ashes.

## **Our Parish Mission Statistics for 2019 (2018 in brackets)**

From Diocesan mission statistics

### **Electoral Roll (reported at APCM) & Sunday/seasonal attendances**

*Electoral roll:* Parish 155 (226), comprising St Wilfrid's 121 (189) and Presentation 34 (37)

*Usual Sunday attendances:* Adults 94 (95); Under-16s 23 (34)

*Easter Sunday and Easter Eve:* Communicants 79 (83); All Worshippers 133 (116)

*Advent special services for Congregation and Local Community:* 100 (126)

*Advent special services for Civic Organisations and Schools:* 790 (1100)

*Christmas Eve & Christmas Day:* Communicants 90 (94); All Worshippers 551 (620)

### **October count (1 fresh expression Sunday service; 0 school services)**

*Sunday services:* 9 (10): Adults – Church 331 (315); Free Expression 25 (18)

U-16s: - Church 56 (11); Free Expression 22 (11)

*Weekdays:* 8 (7): Adults – Church 35 (19); Free Expression 11 (34)

U-16s: - Church 7 (0); Free Expression 0 (17)

**Acts of worship in schools:** our ministry team leads these usually monthly each term

**Our regular worshipping community at the end of 2019** numbered 194 (226), comprising 30 age 0-10 (35); 4 aged 11-17 (4); 80 age 18-69 (80); and 80 age 70+ (107).

In 2019, 0 joined our community (in 2018, 11 first time worshippers: 10 age 18+; 1 age 0-17) and 0 left it (in 2018, 7 age 18+, all because of death or illness)

### **Regular fresh expressions supported by St Wilfrid's Church**

1. Monthly **Family Worship** in church (shorter, busy, non-Eucharistic and based on the Roots programme), for families with children age 0-10, attended by some people who attend other services and others who do not
2. **Toddler Service** (pre-school) in church, then play in the Centenary Hall: Tuesdays (term time)
3. Monthly ecumenical all-age **Taizé Service** in church (meditation, music and prayer), attended by people who regularly come to other services in this or their own churches
4. **Messy Church** (with tea) in the Centenary Hall at least once per half term (started in 2018)

### **Baptisms (including adult baptisms), weddings and funerals**

*Baptisms / thanksgivings for a child's birth:* 13 age 0 (10); 3 age 1-4 (8); 1 age 5-10 (1)

*Weddings in church:* 1 (4) & 0 (0) prayer & dedication services in church after a civil marriage

*Funeral services at or on behalf of St Wilfrid's Church:* 7 (13) at our church; 8 (4) conducted by a member of our ministry team at a crematorium, cemetery or elsewhere.

The above figures *exclude* committal / burial of ashes only (our ministry team conducted no services of this type)

### **Organised social action primarily for the benefit of the whole community (a one-off question in the 2019 return)**

Our churches supported the Haywards Heath Food Bank (in Sussex Road) through volunteers and donations (but were not directly responsible, or in a partnership with other groups or acted as host)

### **Note**

During 2019 there were no exceptional circumstances (such as an interregnum or building works) or significant changes that may have caused these 2019 figures to be unusual.

## **11. Who to contact with your queries and/or to arrange to meet us**

Thank you for taking the time to find out about our churches and the Parish of Haywards Heath. We hope you found the information included of value and interest. Please do feel free to visit our website, which will inform you in greater detail about the day to day life of St Wilfrid's Parish and our two churches - [www.stwilfridshaywardsheath.org.uk](http://www.stwilfridshaywardsheath.org.uk)

**The Parish is committed to equal opportunities and to implementing all safeguarding policies and practice guidance issued by the House of Bishops.**

If you require further clarification of anything which may affect whether you apply for this post, please do contact *either*:

### **The Acting Archdeacon of Horsham**

*until 28 February 2021*

The Revd Canon Julia Peaty

01342 322 386; [Julia.Peaty@chichester.anglican.org](mailto:Julia.Peaty@chichester.anglican.org)

or

### **Our Churchwardens**

Arthur Franklin: 01444 245687; [excusemeajay@hotmail.com](mailto:excusemeajay@hotmail.com) or

Derek Gooch: 07957 226727; [derek.gooch@btinternet.com](mailto:derek.gooch@btinternet.com)

We look forward to hearing from you and meeting you in the near future.



ST WILFRID'S CHURCH AND RECTORY  
from Victoria Park, 18 December 2009