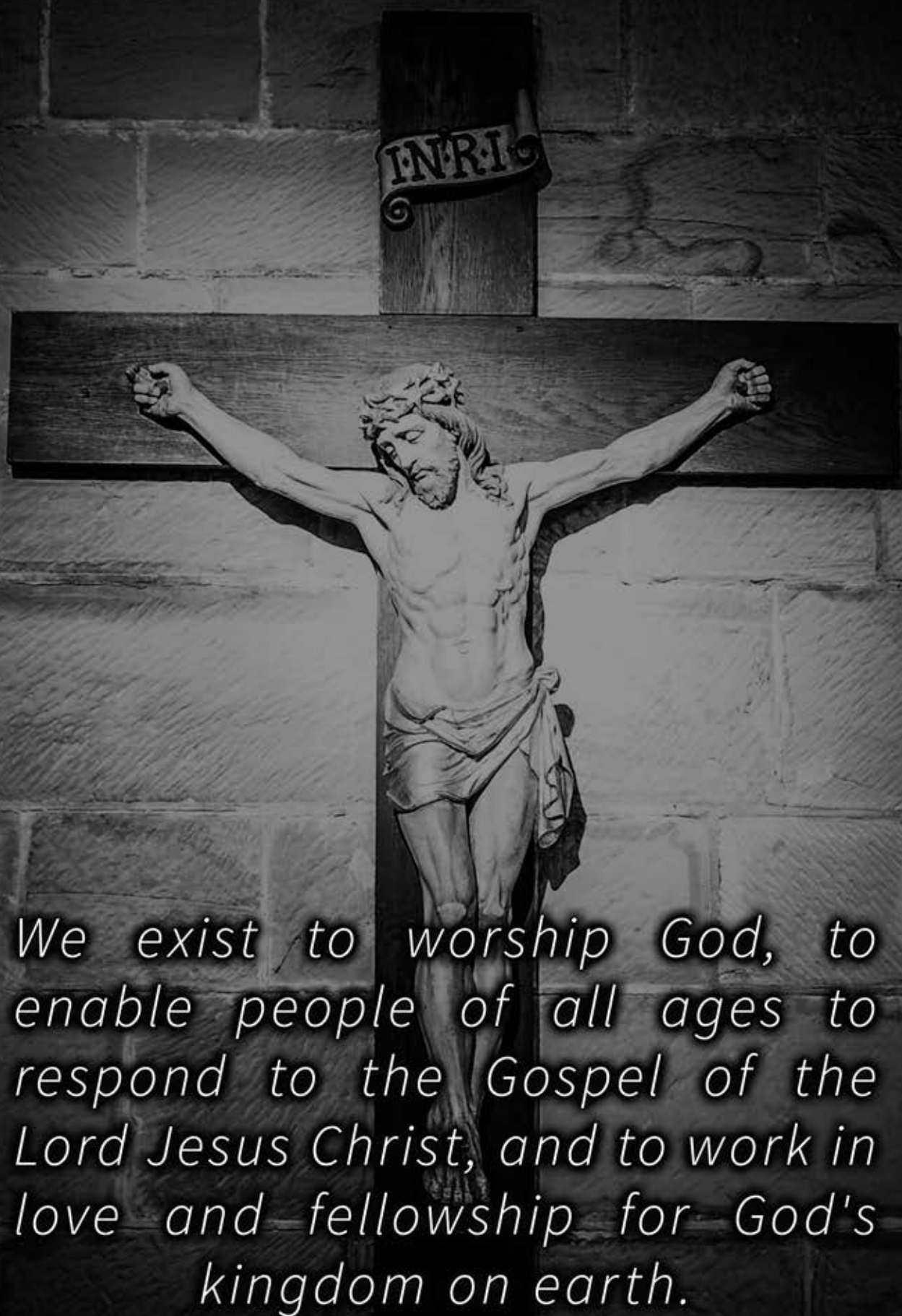


CHRIST CHURCH
WITH ST MARY MAGDALEN AND ST PETER
AND ST PAUL, ST LEONARDS ON SEA

PARISH PROFILE 2020



We exist to worship God, to enable people of all ages to respond to the Gospel of the Lord Jesus Christ, and to work in love and fellowship for God's kingdom on earth.

Christ Church is an Anglo-Catholic church in a parish with one of the highest levels of social deprivation in the country. Worship is at the heart of its life.

The church serves the parish in a variety of ways through its parish school, its housing society and a new partnership with Citizens Advice 1066.

Fr Luke Irvine-Capel led a revitalisation of parish life, notably in its worship and catechesis, in moving the school into the Diocese of Chichester Academy Trust, and in reshaping the Christ Church House Improvement Society.

Work has begun towards the 150th anniversary of Christ Church in 2025 with a programme to enhance the church's place in the community and attract funds for the restoration and adaptation of its historic buildings.

There is a team of willing volunteers looking forward to working with the new Rector to continue a life of renewal.

Contents

| | |
|------------------------------------|----|
| Summary..... | 1 |
| Church and Parish..... | 2 |
| Worship..... | 6 |
| Learning and Growing in Faith..... | 12 |
| Serving the Parish..... | 18 |
| Our Partners..... | 19 |
| Mission Action Plan..... | 23 |
| Maintaining the Mission..... | 24 |
| The Past - Our History..... | 30 |
| The Future..... | 32 |

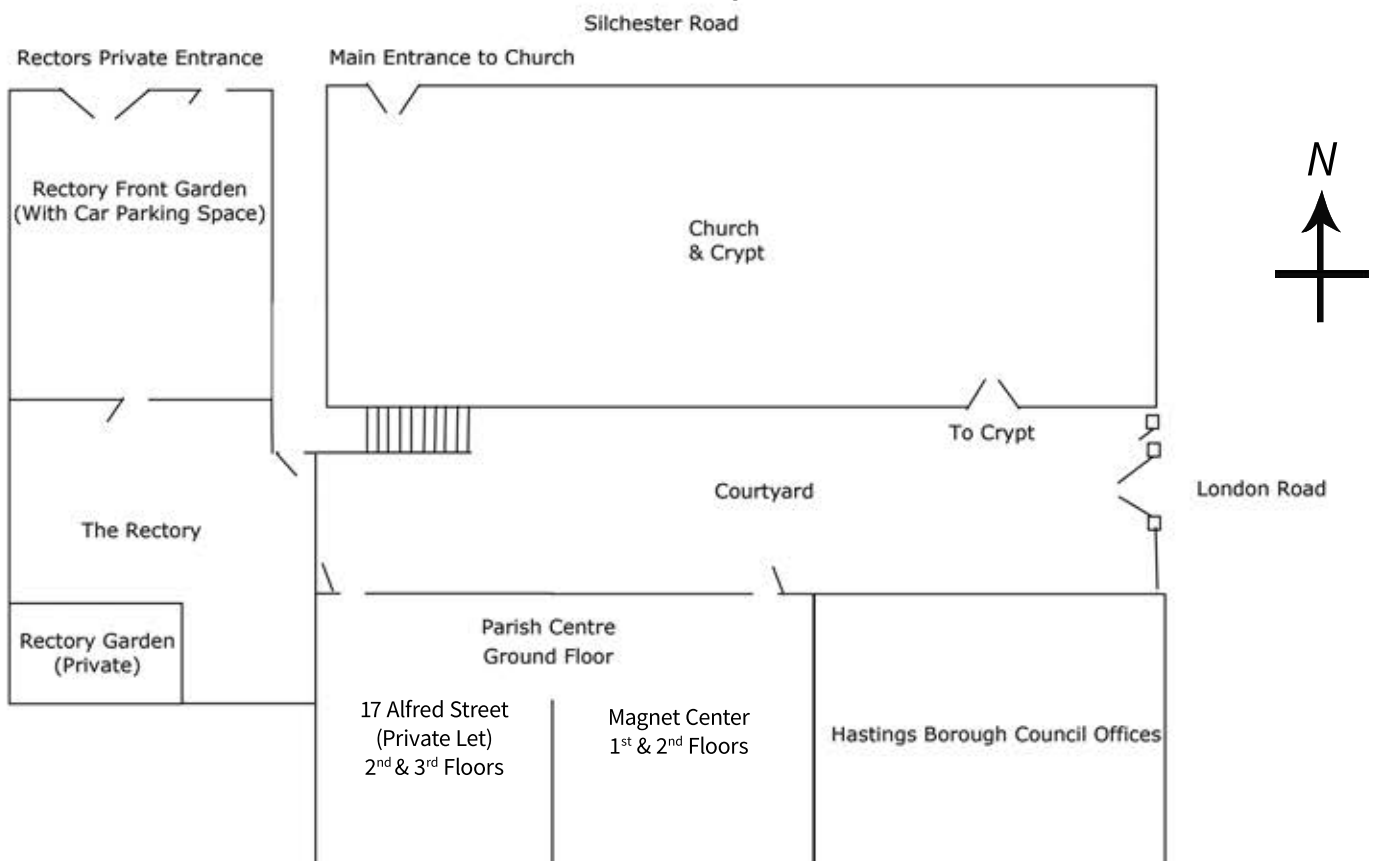


Church and Parish

Hastings and St Leonards is rich in heritage, architecture and culture.

Christ Church stands on the corner of the principal road from the seafront through St. Leonards-on-Sea, and Silchester Road. The tall tower with spire is a landmark in the town centre. Christ Church forms the northern wing of a group of buildings arranged around a courtyard to the south of it. These buildings consist of the rectory, the old school buildings (now the Parish Centre and the Magnet Centre), and the original church (now leased by Hastings Borough Council).

The church was Listed as Grade II* by English Heritage on 14 September 1976. This defines it as a “particularly important” building of “more than special interest”.



From its foundation, Christ Church has been unashamedly catholic in its worship and mission.

The church is a parish member of Forward in Faith. We request episcopal care from a bishop who is a member of The Society under the patronage of St Wilfrid and St Hilda, which in this Diocese is provided by the Bishop of Chichester. We are committed to full participation in the Diocese’s strategy for mission.

Our congregation is drawn from within and beyond the parish boundaries and is diverse in age and background.





Founded to serve in a poor neighbourhood, the parish remains one of the most socially deprived in the country.

The statistics from the 2011 census are below. We consider that they continue to reflect the current situation.

Population 7,956

Index of Multiple Deprivation (IMD) ranked 125 out of 12,599 parishes nationwide

Child Poverty (CP) 43% which ranks 156 out of 12,599 parishes nationwide
(Least in country 1%, in Diocese 2%,
Most in country 64%, in Diocese 44%)

Working Age Poverty (WAP) 28%
116 out of 12,599 parishes nationwide
(Least in country 1%, in Diocese 3%,
Most in country 50%, in Diocese 28%)

Pensioner Poverty (PP) 36%
452 out of 12,599 parishes nationwide
(Least in country 2%, in Diocese 4%,
Most in country 73%, in Diocese 36%)

The indices of deprivation for people in working age and for pensioners are the highest in the Diocese of Chichester. Our level of child poverty is reflected in the challenges which the parish school (rated 'Good' by OFSTED) faces and overcomes. General background to the challenges the local economy faces can be found in the House of Lords Select Committee Report on Seaside Towns (April 2019).





St Leonard's on Sea

St Leonard's on Sea is an exciting place to live, combining the feel of a traditional English town with a mix of independent and up-and-coming quirky businesses.

The streets immediately surrounding the church offer a wealth of cafés and eateries - Farmyard, Fika, and Remy's in the Kings Road, the new Five Aces Café opposite Christ Church and Kassa and Goat Ledge on the seafront to name just a few.

Norman Road is where to head for boutique shopping. An array of beautiful, unusual gifts can be found in Shop, handmade clothing from bramwell-cole, fine art from independent galleries, and vintage finds from a plethora of antique shops both here and down towards the seafront.

With two independent bakeries, a butcher, a greengrocer selling local and organic produce, a quality second-hand bookshop, the independent Kino-Teatr cinema, and the new eco-friendly, packaging-free Shop, Wonderfill, St Leonard's has something to suit every taste!



The sea is wonderful for swimming and water sports, and the beach great for picnics, barbecues, sun-bathing and walking. The green spaces of St Leonard's Gardens and Warrior Square offer a relaxing alternative to the seafront, as well as playing host to live theatre and events during the Coastal Currents arts festival in September, the St Leonard's Festival in July and Frost Fair In December.

There are easy links by train from St Leonard's Warrior Square to London, Brighton, Eastbourne and Ashford. The beautiful woods, downs and villages of Sussex and Kent are also easily accessible by train, bus and car. But with so much available right on the doorstep, why would anyone want to go elsewhere?



Worship

Diocesan Strategy - Growth In Holiness

Pattern of Worship

Worship is at the heart of our life. Mass has been offered daily since the foundation of the building. On Sundays Mass is celebrated at 8.00am and a sung concelebrated Mass with modern catholic liturgy and ceremonial at 10.15am. A Solemn Mass is offered on most solemnities. Mass is celebrated twice daily Mondays to Fridays 10.30am and 6.00pm, and 10.30am on Saturdays. A monthly Mass with Laying on of Hands and Anointing, and a monthly Requiem Mass are also celebrated.

Lay people participate as servers, singers, readers, intercessors, sacristans, sides-people, and Eucharistic Ministers.

Morning and Evening Prayer are said Monday to Friday at 8.30am and 6.30pm. A small group of lay people commit themselves to say the Office daily and join the clergy when able. Evening Prayer and Benediction is celebrated once a month on Sundays at 4.00pm.



A priest is available to celebrate the Sacrament of Reconciliation before the 10.15am Sunday Mass (and at other times by appointment). At the same time there is Exposition of the Blessed Sacrament in the Lady Chapel.

The PCC is committed to keeping the church open daily between Morning and Evening Prayer.

| | |
|-------------------------------------|------------|
| Electoral Roll 2019 | 115 |
| Avg. Sunday attendance (adult) 2018 | 97 |
| Avg. Sunday attendance (child) 2018 | 12 |
| Christmas attendance 2018 | 347 |
| Christmas communicants 2018 | 196 |
| Easter communicants 2019 | 178 |

Parish Ministry

| | |
|------------------------|------------|
| Full costs 2018. | £69,656.00 |
| Net cost. | £64,345.00 |
| PCC contribution 2018. | £50,000.00 |
| PCC contribution 2017. | £67,156.00 |





Eucharistic Ministers & Pastoral Care

Christ Church has eleven active Lay Eucharistic Ministers whose prime concern is the distribution of Communion to the sick and housebound. This is done in a structured and prayerful way, preferably on a weekly basis. Ministers tend to go to particular people in their home or other residential setting. Although the key task is the giving of Communion, it is also seen as a pastoral visit giving the communicant the chance to catch up on what is happening in and around church.



Servers: Confraternity of Our Lady

Mary, the Mother of God, is the patroness of the Christ Church servers. Our team of twelve is run by a Lay Chaplain, responsible for training the servers and collating the rota. Before the celebration of each Mass, to prepare for worship, prayers are said in the outer sacristy, led by a priest. We have a strong liturgical tradition with servers of varied ages and backgrounds. Each plays a significant role in the celebration and preparation of the daily and Sunday Masses, and Benediction.

Our uniformed groups and church school occasionally provide additional servers at special services and church parades.

There is currently a need to build up the serving team and to attract younger members.

Confraternity of The Blessed Sacrament

The local ward of the Confraternity (*Anima Christi*), under the patronage of St Leonard, was reconvened in 1987 and now meets monthly.

There are currently 28 associates who join with other churches in the Hastings Deanery for Vespers and Benediction. The Blessed Sacrament is exposed in the Lady Chapel before the 10.15am Sunday Mass to provide a period of quiet recollection and reflection.



Guild of All Souls

We have a branch at Christ Church. The members pray daily for departed members and others whose names are in the Chantry Book in Walsingham – a copy of which is given to each member.



A Requiem Mass is said once a month. There are free leaflets and application forms from the Guild at the back of the church.



Bell Ringers

The church has eight bells, cast by Gillett & Johnston of Croydon in 1894, and rehung with all new frame and fittings by Taylors of Loughborough in 1999 with the aid of a substantial grant from the Millennium Lottery Fund. At the same time a ninth bell was added, hung dead for electronic tolling, and used to chime the Angelus automatically and before weekday Masses.

All of the installation is in good order.

The ringers number about 15, of various levels of experience, and the bells are rung regularly for the 10.15am Sunday Mass. Practice night is Monday from 7.00pm to 8.30pm.





Music

Christ Church has a long musical tradition.

It is currently served by a stipendiary Director of Music and a small choir of adults and some young people, more of whom are being encouraged to join.

There are plans to use the RSCM chorister training scheme to build their vocal skills.

Our Holdich Organ

The enthusiasm of Walter Goss Custard led to the installation of a four-manual Holdich organ of 43 stops that was commissioned on 18 April 1882. The organ was built into a gallery in the south-east corner of the church (to the right of the high altar).

The 1882 organ remained in use until 1928. It was rebuilt by Norman and Beard in 1901/02 with new Great and Swell soundboards, much revoicing and a new Tuba. The same firm made stop changes in 1914. After a complete breakdown in 1929 the instrument was rebuilt by Willis as a three-manual, and the opportunity was taken to remove the organ to the recently erected rear gallery where the organ was divided. The rebuilt organ was dedicated on 7 May 1930. Walker's carried out further (largely conserving work) on the organ in the 1970s which included rebuilding the Great Organ.

The internationally famous counter tenor Alfred Deller sang in the choir before moving to Canterbury and later gave concerts. Walter Goss Custard and Allan Biggs are among our past organists.





Parish Epiphany Meal



Parish Pancake Party



Coffee after Parish Mass



Summer Fayre



Coffee after Wednesday Morning Mass and Holy Rosary





Learning and Growing in Faith

PALS (Praise & Learning on Sunday)

Our Sunday School's name places emphasis on worship and exploring. A team of seven adults leads sessions on a rota basis. The group meets in a room in the crypt with a selection of books and other resources, some used for teaching, some for the children to explore for themselves.

Before Mass the children and leaders meet in the south aisle, in an area called Pray & Play, where there are also some resources. Children under four must be supervised by a parent or carer, both in this area and in PALS.

The group joins the end of the entrance procession and is given their Bible from the altar by the celebrant. They then go downstairs for about 40 minutes of worship, learning, craft and activity, returning during the Offertory Hymn. The children then either return to their parents or take part in the Mass from where they are. At Communion they receive a blessing. We encourage them, once confirmed, to stay in church for the full Mass, perhaps to sit with us or to serve or to sing in the choir.

The teaching either follows the liturgical calendar or a theme over a few weeks. This year (2019) we followed the Diocesan Lent Course for Children – 'The Remarkables'.

The children usually give a short presentation to the congregation after the notices, before the end of Mass. PALS meets during term time with breaks for Easter, Summer and Christmas. The Pray & Play space is always available.

The leaders are attempting to attract more children to this group by developing links with the school and uniformed organisations.



Christ Church CE Primary and Nursery Academy

Christ Church CE Primary and Nursery Academy is a two-form entry school with 460 pupils on the roll, for 2-11 year olds. It became an Academy and a Woodard School in 2017.

Christ Church is very proud of its school, which moved from its original site next to the church to a new site in the north of the parish in 1989. The links between the two are strong and of great mutual importance. Efforts continue to make the most of this relationship, which will be a priority for any Rector.

Most pupils live in the immediate catchment area, within a ward of high socio-economic deprivation. Three previous SIAMS reports have judged the school 'Outstanding', and the last OFSTED inspection gave it a high 'Good'; it was noted that the pupils demonstrate high levels of social, moral, spiritual, and cultural development.

Some staff are worshipping members of Christ Church, but not all staff are practising Christians. Each staff member, however, supports the strong Christian ethos of the school in line with its Mission Statement. Our church's Director of Music is also a Year 6 teacher in the school, and is the designated Leader for Church School Links.

The parish clergy help plan collective worship and lead it at least weekly, assisted at times by 'Open the Book' (a Bible Society initiative where volunteers from local churches, including ours, act out Bible stories), and the Christian Schools Workers (who lead collective worship on different Bible themes). New planning is currently underway for collective worship, with a weekly theme with suggested readings, resources, and prayers.

Mass is central to the life of the school. Clergy regularly celebrate Mass in the hall and classrooms, and support Religious Education teaching by, for example, membership of the Ethos and Worship group. The school has also recently been developing a 'Messy Mass', with members of the Christ Church congregation and families welcome.

The clergy are available to play a part in the life of all children, parents, and staff members at moments of need, providing pastoral care and support.





Stations of The Cross created by Christ Church pupils displayed in the church.

In March, clergy, staff and pupils take part in the Children's Pilgrimage at Walsingham. This has become a very popular event, with 28 children attending in 2019. This is subsidised by the parish's charitable trusts, keeping the cost to a minimum for families.

Clergy are part of the school team and attend social and fundraising activities. The Rector is an active *ex-officio* member of the governing body. There is an Ethos and Worship governors group which oversees these areas of our school's life, and looks at new SIAMS frameworks. Members of the Christ Church congregation also serve as Foundation Governors. Each governor is linked to a particular curriculum area.

Pupils contribute to life at Christ Church by performing music, reading, leading intercessions, acting, serving, and welcoming the congregation at different Sunday Masses such as Advent, Education Sunday, and Mothering Sunday.

School displays contribute to church exhibitions and festivals. Our church's children's activities and the Sunday children's group (PALS) are advertised in school.



There are regular school visits to the church which serves as a valuable resource for RE, art, culture, citizenship, history, design technology, and other areas of the curriculum as well as promoting SMSC (Spiritual, Moral, Social & Cultural) learning.

The school looks forward to sustaining and further developing these strong links.

The Headteachers write; “We would wish the new Rector to be fully involved in the life of the school, to be a member of the governing body, to provide quality foundation governors for the school and to be a guiding presence around our Church school.

The new Rector would support us in achieving the church school aims.”



Uniformed Groups

The 9th Hastings (Christ Church) Scout Group celebrated 100 years of activity in 2009. It has a thriving and enthusiastic beaver colony, cub pack, and scout troop that is steadily growing. These sections are run by well-trained leaders and provide exciting, adventurous and stimulating activities for boys and girls aged 6-14 years. They learn many new skills and gain in confidence and ability in their everyday lives. In the interregnum there has been a sustained attempt to consolidate links between the church and organisations.

The Group attends two church parades each year; one in April at St George's-tide (the Patron Saint of Scouting) and the other in October at St Francis and St Teresa-tide (the Patron Saints of the Group). It has also attended recently on Remembrance Sunday. The Group badge shows the three nails of the cross, representing St Francis's stigmata, the motto being 'we bear the wounds of Christ'.



The Group has an Executive Committee consisting of the section leaders, a Chairman, Treasurer, Secretary and Parent Representative. The Rector is invited to attend. The trustees form the Executive Committee, raising funds and supporting Group activities. The Scout Group meets in the Parish Centre.



Adult Learning

Each year we take a full part in our Diocesan Strategy theme.

In 2018 we hosted nine study groups based on Prayer for the Deanery. A guest speaker delivered a lecture and we contributed to a discussion which followed. We have also had Bible study groups, and a young adult study group led by our clergy.

For the Year of the Bible in 2017, a weekly group led by a lay person read the entire Bible in under eighteen months. We also follow the annual Diocesan Lent Course, meeting every Wednesday and Friday morning after Mass. These courses are well attended and there are always fruitful discussions.



The Wednesday Coffee group meets weekly in the crypt, after the 10.30am Mass. The proceeds fund a candle lantern which burns at the Shrine throughout the year, as well as supporting outings during the annual pilgrimage.



Annual Pilgrimage to Walsingham

Christ Church has been an enthusiastic supporter of The Shrine of Our Lady of Walsingham since its early days. One of the Stations of the Cross in the Shrine grounds was donated by the people of Christ Church in memory of Fr Roberts, the fifth Rector.

The Annual Parish Pilgrimage usually takes place in June (Monday to Friday). When staffing permits, there has been an additional pilgrimage for children, and another which takes place over a weekend (in August or early autumn).

Serving the Parish

Dioscesan Strategy - Contributing to the Common Good

St Richard's House

Christ Church House Improvement Society was formed in 1935, with the aim of tackling the slum areas within the parish. The original derelict homes that were brought back into use were subsequently sold and the current block of 40 flats erected in the early 1950s.

Although not a registered Charity, the Society has charitable objects and continues to provide low-cost accommodation for single able-bodied persons over the age of 55 who otherwise may find it difficult to obtain such property within the private rented sector.

The Board of Directors is chaired by the person appointed at each Annual General Meeting. The Company Secretary is Trevor Davies and the Managing Agents are FPE. Fr Richard Ralph attends Directors' meetings. The Directors have the responsibility of administering and maintaining St Richard's House, Pevensey Road, St Leonards-on-Sea.

During 2018 the Board of Directors completed a significant programme of works at St Richard's House to ensure health and safety compliance, as well as improvements to the standard of the flats for our tenants.

The registered address is:

Christ Church Parish Office,
2 Christ Church Courtyard,
London Road,
St Leonards-on-Sea,
TN37 6GL.



Friday Cafe

We provide free coffee and chat for the community, once a month on the second Friday 11.00 am - 12.30 pm. This is staffed by volunteers from the church. It consists of welcoming, and convivial conversations usually with a group of 8-10 visitors. Community information is also available.

Litter Pick

Once a week, for an hour, we walk the streets of Central St Leonards and the 7 Streets Area behind Christ Church to pick up litter.

The streets get pretty messy due to our local 'overly friendly' seagulls. This small but vital task means we are providing good community work while being seen by our locals.

There have been more pastoral conversations as a result of this simple endeavour than from a week's worth of normal encounters.



Our Partners

Seaview Project

The Seaview Project is a local charity which provides an open-access wellbeing centre near the church, offering help and inspiration for people living on society's margins.

Christ Church keeps a box at the back of church for people to donate items that the charity regularly requires



The Snowflake Night Shelter

From November to March each year seven of our local church halls are open for sheltering the homeless. Snowflake is led by a small committee who organise volunteers to create the shelter space, cook, and talk to the homeless guests. There are evening, night, and morning shifts staffed by volunteers, some of whom are from our congregation.

Severe Weather Emergency Protocol (SWEP)

Hastings Borough Council approached Christ Church in 2017 to provide a warm space in severe weather for those who are not accessing Snowflake. We keep the heating on in the crypt and clear the area for the guests to sleep in. Dom's Food Mission provides the food and local people donate sleeping bags, duvets and toiletries. The parish clergy visit the guests and the all-night security team.

Community Liaison

Clergy and Christ Church Old Buildings Trust representatives meet regularly with the Hastings Community Safety Manager, local councillors, police and other interested parties as part of The Central St Leonards Anti-Social Behaviour Review Team to discuss and promote ways forward for the improvement of our community and its well-being.

Formed initially to act positively regarding behavioural issues, the team also discusses issues such as the maintenance and upgrading of our local area. The rebuilding of the steps up to Alfred Street and the colourful murals being painted are two examples of rejuvenation.

We liaise with St Leonards Town Team regarding popular social events such as monthly street markets, The Frost Fair and St Leonards Festival. Christ Church is in the centre of our community and we take our duty of care towards the local community very seriously.

The Citizens Advice 1066 (CAB)

The Citizens Advice 1066 and Christ Church Old Buildings Trust (CCOBT) entered into a new and fruitful relationship when the CAB took over the Magnet Centre building (opposite the church) in 2019. There is plenty of footfall of vulnerable people within Alfred Street and the front of Christ Church, London Road.

We would like to build on this relationship by tying in the links of Citizens Advice 1066 and the church's pastoral work. This has begun with our monthly Friday Cafe.

The CAB team are always friendly and we would like to continue this happy relationship.

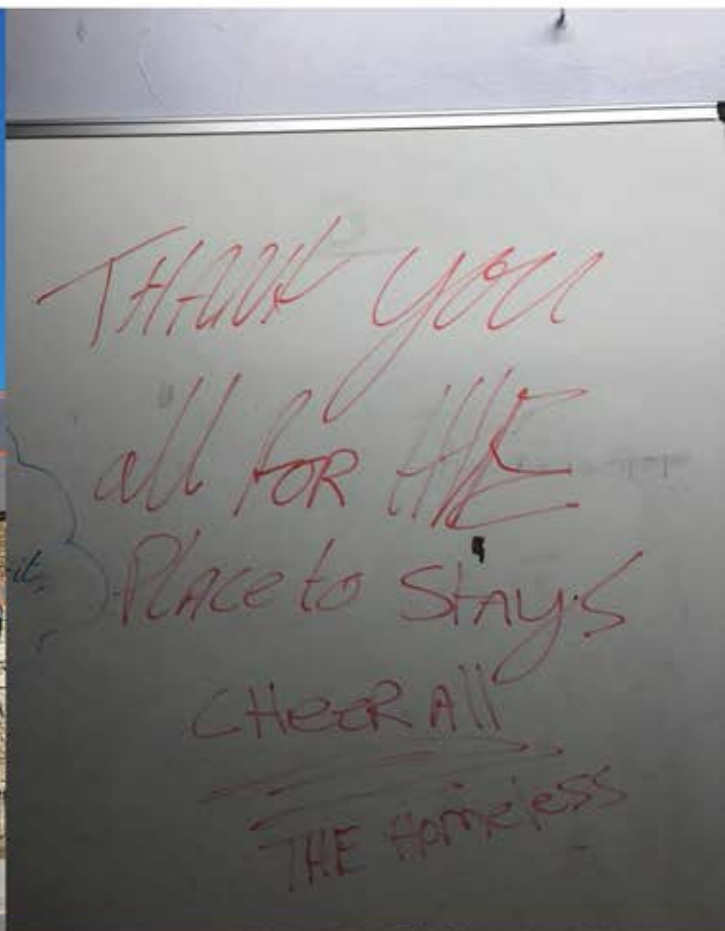
The Fellowship of St. Nicholas

The Fellowship of St. Nicholas is a UK registered children's charity that was founded in 1939 by Father Lancelot Templeman Mellor, a curate at Christ Church. The church and Fellowship still enjoy a good working relationship, albeit not as close as in the past.

Charities

The parish is responsible for administering two trusts: the Mary Magdalene Educational Trust and the Sarah Brisco Trust. These are managed by the Rector and wardens with some additional lay representation, and can be used to benefit those in need within the church and parish.

The Christ Church House Improvement Society also supports some church and parish activities in accordance with its wider charitable purposes.



Christ Church Old Buildings Trust (CCOBT)

CCOBT is a registered charity and freeholder of (and therefore responsible for) the Christ Church old school buildings comprising the original church, which later became the first school, and the former rectory for the clergy of Christ Church. It also owns the land on which Christ Church CE Primary & Nursery Academy now stands.

The objects of the Charitable Trust are: the advancement and promotion of theological education and training for lay and ordained persons in the Church of England; meeting rooms for the Ecclesiastical Parish of Christ Church and St Mary Magdalen, St Leonards on Sea; accommodation for clergy and their families within the Church of England; other charitable purposes connected with the Church of England.

Personnel: The Trustees (as of April 2019) are: The Rector of Christ Church; Miss Maureen Mason; Mrs Maureen Harman; Bishop Peter Wheatley; Bishop Nicholas Reade; Mr Ian Mackellar. The Clerk to the Trustees is Mr Andrew Knight. The Board meets approximately every 2 months. There are no employees of the charity.

Income Generation: The sources of income are: rent for the Curate's flat (17 Alfred Street); rent from Hastings Borough Council under a 125-year lease for part of the building; and a 10-year lease with CA1066 (Citizens Advice) for the Magnet Centre. The current income only just covers the revenue expenditure with little in reserve to maintain the buildings in good condition, a challenge currently being addressed by the Board of Trustees.





Deanery and Ecumenical

Christ Church is a member of Hastings Deanery Synod, which meets four times a year in our churches.

The Deanery is at present exploring ways to make itself more useful to its members in support of each other. We are also working with Archdeacon Edward Dowler to continue the ongoing process of Deanery Review, looking at options for a future pattern and organisation of ministry.

Our representatives are Miss Louise Fisher, Mrs. Anne Hanney, Dr. Elizabeth Mackay.



Christ Church Mission Action Plan 2014 - 2019

The PCC is committed to 'engagement with this vulnerable and fragile community in all its complexity'. We look forward to our new Rector helping us to frame a new Mission Action Plan for the next five years.

| AREA | Church Growth | | Community Ministry | | Finance, Buildings and Admin | |
|-------------|--|----------------------------------|--|--|--|--|
| AIM | To deepen our life together in Christ and so make new disciples. | | To serve our community through seeking and celebrating the presence of Christ within it. | | To increase our current level of ministry through our own resources | |
| | Objective | Resp | Objective | Resp | Objective | Resp |
| 2014 - 2016 | Improve welcome and initiation of new people and foster a culture of invitation | PCC/ LIC/Wardens | Increase the hours for which our church is open. | PCC/LIC | Streamline and integrate our financial structures and improve our capacity for fundraising | LIC/Treasurer/ Wardens/ PCC |
| | Enable life-long formation in Christ through collaboration between clergy and laypeople | PCC/ LIC | Identify the needs and challenges confronting local people and respond eg, food bank, legal advice | PCC/ Mission & Outreach group | Improve internal and external communication through, eg, new media & noticeboards. | LIC/Treasurer/ Wardens/ PCC |
| | Encourage a culture of daily prayer amongst our people | Clergy | Active co-operation with community projects such as GCSL, Snowflake project | PCC/ Mission & Outreach group | Raise commitment to stewardship through improved awareness of our financial situation. | LIC/Treasurer/ Wardens/ PCC |
| | | | Increase ministry to our school, and appointment of Foundation Governors. Improve mutual communication between church & school | LIC/Head/ Foundation Govs | Stay up to date with Common Fund payments | PCC |
| 2014 - 2018 | Identify and adopt new times and methods to nurture laypeople in faith and commitment. | LIC | Increase use of the Parish Centre, especially for community groups and projects. | PCC | Develop links with the local artistic community through hosting concerts/exhibitions | PCC/ Mission & Outreach group |
| | Improve the breadth, range and quality of our ministry to children. | LIC/ PALS team/School Head | Develop ministry to local care homes and offer regular services | LIC | | |
| | Identify and exploit evangelistic potential of community contacts eg care homes, occasional offices. | LIC/PCC | Develop ministry and support for our uniformed organizations, and explore re-opening our Youth Club | LIC | Source funding for the appointment of a paid children's worker | LIC/Treasurer/ Wardens/PCC |
| | Develop work with the young supported by the recruitment of a children's worker | LIC/PCC | Develop social events eg, outings, bring & share Sunday lunch | Mission & Outreach group | | |
| 2014 - 2019 | Use the skills of laypeople to oversee Christian formation. | LIC/ New Group | Develop a culture of volunteering and a database of partner organizations | LIC/PCC | Improve planned giving by 50% in real terms | LIC/Treasurer/ Wardens/ PCC |
| | Build the breadth and range of our worship | LIC | Explore transport to church options | Mission & Outreach group | Develop a business model to maintain and increase lettings income. | LIC/Treasurer/ Wardens/ PCC |





Maintaining the Mission

The Parochial Church Council

The Parochial Church Council has the responsibility of co-operating with the Rector in promoting the whole mission of the church - pastoral, evangelistic, social and ecumenical. The PCC consists of the Incumbent, licensed clergy, the churchwardens, the Deanery Synod Representatives (3), any parochial member of the Diocesan Synod (all ex officio) and 12 elected members. Elected members and Deanery Synod Representatives serve for a three-year term of office. After two consecutive three-year terms they stand down and are not then eligible to stand again for election until one year has elapsed.

Finance

The church's finances are kept under constant review. A budget is prepared each November for approval by the PCC. Monthly management accounts are prepared by the Treasurer and distributed to Standing Committee meetings. These compare actual income and expenditure against both budget and the previous year. The Finance Team comprises the churchwardens, Valerie Wilson (who provides practical support), and the Treasurer. They ensure that the day-to-day finance activities are kept up to date.

The church is asset rich and income poor, and on a regular income and expenditure basis has an annual deficit of in excess of £40,000. Every effort is made to keep expenditure to a minimum, but the largest individual cost is the Parish Share of £60,000 p.a., a sum that is paid in full despite our income shortfall. To address this, the Treasurer, together with the Standing Committee and Finance Team, have prepared a five year plan to attempt to achieve routine self-financing. Without addressing this problem the current assets of £500,000 would be used up within ten years. A number of areas are being investigated, including increased stewardship promotion, hypothecated giving, and increased gift aid possibilities.



Monthly Saturday sales have become increasingly popular, especially among the local community, and now attract quite a few 'regulars'. The profits go towards our general fundraising. Over the years the amounts made have increased and now bring in between £300 and £500 each time. A regular team of about 10 members of the congregation work hard to make them such a success.

Our two main Fayres also use the Parish Hall. These generally raise between £1600 and £2000, and have a wider selection of stalls and more helpers. Both monthly sales and Fayres have a raffle. They are all enjoyable and social occasions.



Christ Church Book Room

We house the books donated for the sales in a room in the Parish Centre. Over the past year this has been developed into a Book Room that is open for sales to the public on Monday and Wednesday mornings. It also sells jigsaws, games and some pictures. This facility is publicised, and is becoming more well-known, providing another resource for the local community, and a source of fundraising.

This room is also available to hire as a meeting room.



Buildings and Maintenance

Christ Church is an imposing building and has been Listed as Grade II* by English Heritage. The church has recently had a very thorough Quinquennial Report, which has highlighted a considerable amount of work to be done over the next five years to maintain the building in good working order. Our new architect has laid out a staged approach, and suggested contacts with various charities. A recent bequest is enabling us to put a kitchen and an accessible toilet at the back of church.

This is essential for a number of reasons, not least Health and Safety requirements. Routine servicing continues to be carried out – boilers, electrical work, organ tuning, font lifting mechanism, fire extinguishers, replacing light bulbs, plumbing etc.



The Parish Centre

The Parish Centre, comprising a hall and stage, small meeting room, kitchen, toilets, and parish office, is housed in part of the former Christ Church School and stands next to the church. The building is owned by the Christ Church Old Buildings Trust (CCOBT) and the Parish Centre is leased from them for 25 years at a peppercorn rent.

The main hall is let regularly to a range of local organisations and to individuals for events, and forms part of our commitment to outreach. The Centre has recently been decorated to a very high standard.



The Parish Office

The office is open on Monday, Wednesday and Friday mornings from 9.00am - 12.00pm and is staffed by a team of volunteers. This group manages the letting of the Crypt and Parish Hall, co-ordinates the ordering of church and office supplies, prepares miscellaneous notices and handles general enquiries. The new Rector can be assured that much of the routine administration is shared by the laity.

The Rectory

The modern Rectory is situated at the west end of the complex, between the church and the old school buildings. It is of Green Guide standard, part brick and part stone. The stonework is on the elevation facing London Road so that it harmonises with the church and old school buildings. The public area of the house is reached by a separate front door. The house comprises sitting room, dining room, study (with two ante-rooms), kitchen, cloakroom, four bedrooms, two bathrooms, a private courtyard at the rear, and off-road parking.





Flower Group

A rota of volunteers supplies flowers weekly. There are usually three arrangements, many more at Christmas, Maundy Thursday and Easter. Weekly flowers are funded by the PCC and extra funding is available at Easter and Christmas. The school occasionally sends children to help arrange their flowers for us.

Sewing Group

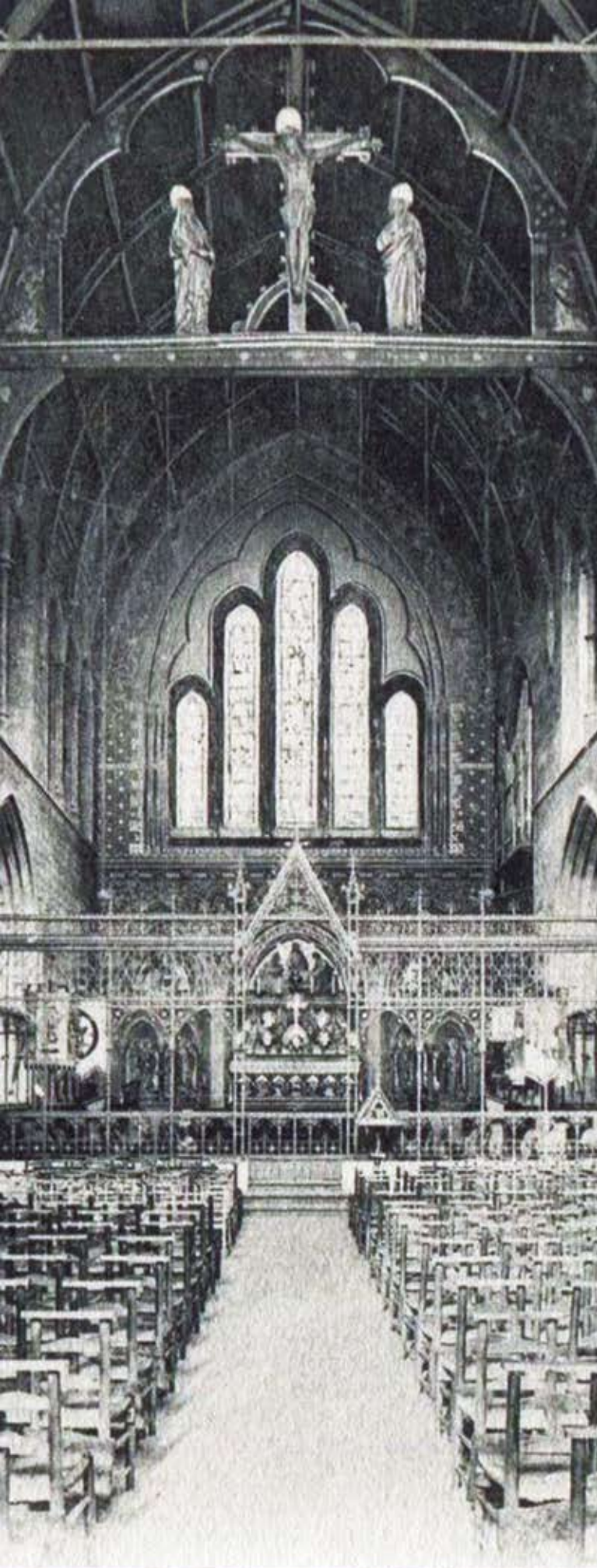
On most Wednesday afternoons a group of parishioners meets in the crypt to make new items for sale at the Church Fayres and to repair and restore liturgical vestments and altar linen for use in the church. The group supports Project Linus (providing blankets for sick and terminally ill children) and the Mustard Seed Mission (providing clothes for poor countries).

Dining Club

Christ Church may be good at praying, but we need to be better at playing! In 2017 we began a monthly curry club simply to eat and drink in fellowship. Eight or ten of us meet at a local restaurant.







The Past - Our History

The first church on the site, Old Christ Church, was opened on 9 September 1860. It soon became evident that the original church building was too small to cope with the growing congregation. The new church was built on derelict land adjoining the north end of the old church to designs by Sir Arthur Blomfield. It was opened for worship in 1875, with the steeple added in 1894. The west end extension, including the two westernmost nave bays, was undertaken in 1926 - 27 to designs by C G Hare. The building is impressive both in scale and in architecture, which is also reflected in the fine interior.

Throughout its history Christ Church has been blessed with outstanding Rectors notable for their personal holiness and dedication to catholic worship and social action. From the beginning it was involved in education and care of the less privileged members of society.

The church has been prominent nationally in the promotion of the Catholic cause within the Church of England and remains an important centre for Catholic observance. It has trained many curates and inspired social projects, some of which continue today.





Over the decades, Christ Church has been known for the dignity and beauty of its worship and liturgical music, marking the lives of many and inspiring numerous vocations.

It is open for prayer throughout the day with people coming in and out constantly, lighting candles and kneeling in private devotion.

Daily Mass has been said in church since its foundation, perhaps explaining its spiritual atmosphere, to which so many have been sensitive.



The Future

Hopes and Expectations

At the PCC meeting on 7 May 2019 we discussed the parish's strengths, weaknesses, opportunities and threats. We asked ourselves what we do well and where we could improve, identifying some excellent opportunities for the future.

Strengths

The church is kept open daily and we maintain a rich liturgy and pattern of daily worship. We accept all who come, including the vulnerable, lonely and severely disadvantaged. We reach out into the community, supporting projects such as Seaview, SWEP, Snowflake, and tea parties at St Richard's House. We are willing to embark on new community ventures such as hosting monthly coffee mornings in the crypt.

Our links with Christ Church Academy are strong, our uniformed groups are thriving, and parish administration is shared and well run. In terms of the wider Church, we are committed to paying a full Parish Share.

Weaknesses

Our income does not match our expenditure. The church buildings are old and require expensive maintenance. We need to raise more money for repairs. Our engagement with young adults and children in our worship and community life needs improvement.

Opportunities

We can develop our community links further. We can build on the established link with the Citizens Advice 1066, offering care to our parishioners in church and the wider community. We could further reach out to young families locally by starting a mother and toddler group, helping families expecting a child with provision of essential items (Banks for Babies), and offering practical assistance to help families get to church.

We have a website and social media accounts in place which could be better used to





promote us and our work. We need to inspire more generous giving if we are to meet the costs of maintenance and running the parish.

Threats

We rely on financial resources which are diminishing and our commitment to paying the full Parish Share incurs a cost to our reserves. There is also the threat of the cost of 'overdoing' building repairs.

Hopes and expectations of our new Rector

We expect our Rector to be committed to our pattern of worship, and to develop education in the widest sense, catechesis of the faithful and newcomers, strong involvement in collective worship in the Academy, outreach into the uniformed organisations. We have benefitted from the presence of curates in training and hope that a new Rector would be someone the Bishop considers suitable to train the newly ordained.

There is a lot happening in and around the church. Our Mission Action Plan comes to an end this year, 2019. Although we have profited from sharing fully in the Diocesan pattern of 'Years of...' our 'Action Plan' now reads more like a 'to do' list. We see a great opportunity for a new Parish Priest to help us consolidate what we do well and plan for future outreach.

The new Rector needs to see his sharing in governance in the Academy, St Richard's House and the Old Buildings Trust as opportunities for both outreach and care of parishioners.

We are in good heart. We have benefitted from the inspiration and energy of past clergy and look forward to a new Rector for the challenges of the future.

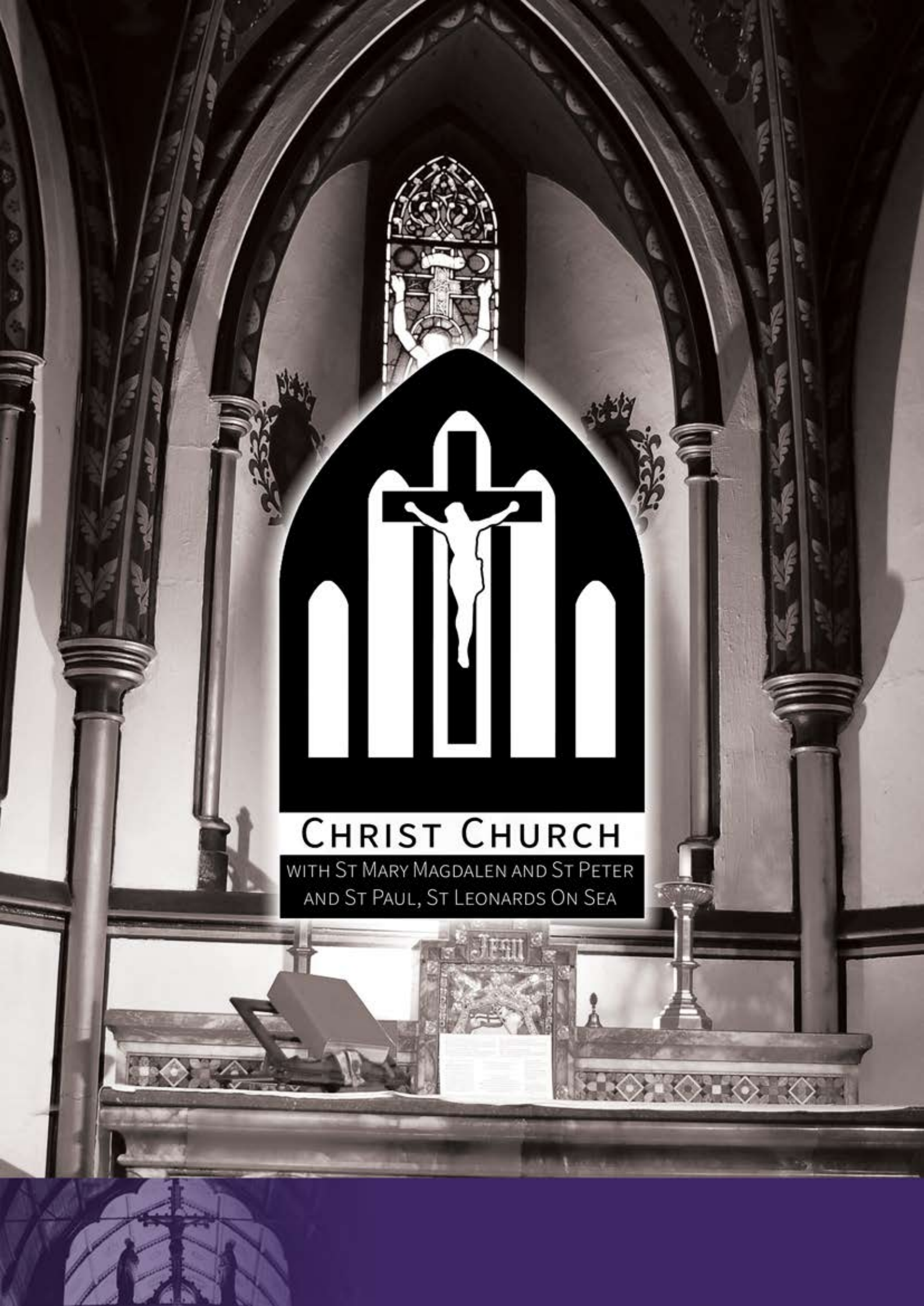
Person Specification

We seek to appoint a Rector for this established Catholic parish within the Church of England:

1. Of orthodox Catholic conviction and theology in the maintenance and teaching of the historic faith of the Church.
2. Willing to maintain and develop our modern catholic approach to liturgy and music, centring upon the daily celebration of the Mass and Divine Office, Sacrament of Reconciliation, and devotion to the Blessed Sacrament.
3. A pastoral priest with the missionary zeal and personal warmth to carry the Christian message into the homes of the parish and local community.
4. In possession of a clear sense of purpose and the energy, stamina and vision to achieve it.
5. Prepared to take an interest in all age groups, with a particular emphasis on the encouragement of families, young people and children in the life of the parish.
6. Leading worship in our church school, and celebrating Mass with the children, serving as a Governor and developing the strong links between church and school.
7. Willing to work collaboratively with the churchwardens and officers of the PCC in the management of the parish; with the capacity to understand challenging issues in financial and building management and to encourage strategic decision-making in these areas.
8. Able to discern and use gifts in managing a clergy team of stipendiary and voluntary staff.
9. Able to integrate the Rector's wider commitments to the Christ Church Old Buildings Trust, Christ Church House Improvement Society, and the parish charities, within the social mission of the church.

We welcome applications from both married and unmarried priests - the Rectory being suited to the needs of a married priest and his family, and also to single occupancy.





CHRIST CHURCH
WITH ST MARY MAGDALEN AND ST PETER
AND ST PAUL, ST LEONARDS ON SEA





**Christ Church with St Mary Magdalen
and St Peter and St Paul, St Leonards On Sea**

Christ Church Parish Office,
2 Christ Church Courtyard,
London Road, St Leonards on Sea,
East Sussex, TN37 6GL.

www.christchurchstleonards.co.uk

